

17th Annual National Pastel Painting Exhibition

PASTEL
SOCIETY
OF
NEW
MEXICO



November 7 – 23, 2008 • Albuquerque



Faces (top)
Looking On (bottom)

BILL BAKER



Hispanic Arts Center
EXPO New Mexico



Left:
Red Socks
MARILYN DRAKE



Below:
Still Life with Lemons
SARAH BLUMENSCHN



presents

The 17th Annual National Pastel Painting Exhibition

November 7 – 23, 2008

Opening Reception and Awards Presentation
Friday, November 7 from 5 – 8 pm

HISPANIC ARTS CENTER
EXPO New Mexico
Albuquerque, New Mexico

EXHIBIT HOURS

11 am – 5 pm, Tuesday - Friday
10 am – 5 pm, Saturday and Sunday

Pastel Society of New Mexico

2008 Officers

Elaine Koehler

President

Wanda Portee

Vice-President

Lee McVey

Secretary

Peggy Orbon

Treasurer



The **Pastel Society of New Mexico** (PSNM) is a nonprofit arts organization formed in 1989 by a small group of artists seeking to promote the appreciation of the soft pastel medium as well as to contribute to the growing arts community in New Mexico. Although PSNM is based in New Mexico, our membership now includes artists from more than half the states in the nation.

Membership is open to anyone interested in pastels. To become a member, go to our website: www.pastelsnm.org or send a stamped, self-addressed envelope to: **PSNM Membership, PO Box 3571, Albuquerque, NM 87190**

On behalf of the Pastel Society of New Mexico, we welcome you to our 17th Annual National Pastel Painting Exhibition.

Once again, artists from all across the country have submitted their best work, hoping to be selected to participate in this prestigious competition. We appreciate each of these entrants, and congratulate all of those whose paintings are in this show. The resulting display is an amazing array of paintings, each representing the beauty and versatility of pastels. This year, through the jury process, from over 360 entries, 139 of the finest paintings were selected.

PSNM would like to thank this year's distinguished jurors, Bill Hosner, Ned Mueller, and Bob Rohm. We are very grateful to our judge, Sheila Rieman, who so carefully and thoughtfully chose the winning entries. Their time and support is greatly appreciated, and their expertise invaluable.

Thank you, also, to our sponsors. Each year, their generosity and continued support allow us to provide this important venue for the promotion of the pastel medium.

And, of course, a heartfelt thank you to all of our volunteers, who dedicate so much of their time, energy and talents for the love of their art. Every one of you makes this show possible.

Janie Gonzales & Margi Lucena,
National Exhibition Committee Co-Chairs

SHEILA RIEMAN - Judge

Born in Minnesota, Sheila Rieman grew up in rural North Dakota and studied art at North Dakota State University and with master pastelist Albert Handell. From 1980, she has been dedicated to that medium, although she works in other mediums as well.

Sheila has been a full-time artist since 1986. Her studio is an early 1900s schoolhouse in Leonard, North Dakota. She was one of sixteen artists invited to participate in the 2004 North Dakota State University "Women of the Plains" Exhibition. Sheila's work has been widely exhibited for over 25 years. She is the recipient of the 2002 Artist's Choice Award and the 1994 Tuffy Berg Award at the C.M. Russell Art auction, as well as having received numerous awards from pastel societies and juried exhibitions. She is a regular participant in the Buffalo Bill Art Auction and Quick Draw in Cody, Wyoming and has been an invited artist at the Coors National Western Art Show in Denver, Colorado.

She is a signature member of the Pastel Society of America, the American Academy of Women Artists, and the Midwest Pastel Society.

BILL HOSNER - Juror

Bill was born in Detroit, Michigan in 1950. He earned his BFA at Wayne State University and studied illustration at the Center for Creative Studies, College of Art and Design in Detroit. For 17 years Bill produced illustrations for companies such as *Readers Digest*, *Field and Steam Magazine*, CBS-Fox Video and The Kennedy Center for the Performing Arts.

At the peak of a highly successful career in commercial art, Bill rededicated himself to fine art painting, intent upon building a new career which would allow him the freedom to grow artistically as well as spiritually. To further develop his artistic abilities, he enrolled in the Scottsdale Artists School in Arizona. There he studied under two master painters, Harley Brown and Dan Gerhartz.

Bill's work is solely dedicated to the art of *plein air* painting. For Bill it all makes sense; "A photograph freezes a moment in time. While, over a painting session everything is moving, changing... the artist as well as the subject. During that experience the work evolves, is dynamic and can take on the energies of life.

Bill is a Signature Member of the Pastel Society of America and the Pastel Society of the West Coast. He has received the Gold Medallion and been inducted into the Master's Circle of the International Association of Pastel Societies.

NED MUELLER - Juror

Born in Wisconsin and raised in Montana, Ned Mueller has been drawing and painting all of his life. He graduated from the prestigious Art Center School of Design in Los Angeles where he also taught drawing while still a student. His love for life and art is reflected in his superb paintings of a wide range of subjects and done in several mediums. Ned worked as an illustrator for 25 years while building a solid foundation of professionalism and has worked as a successful full time artist since 1984.

He is a signature member of the Oil Painters of America, The Northwest Watercolor Society, The Plein Air Painters of America, Northwest Pastel Society (Distinguished Pastelist), Northwest Rendezvous Society, Laguna Plein Air Painters and Puget Sound Group of Northwest Painters.

BOB ROHM - Juror

In the years following his graduation from the York Academy of Arts in 1970, he entered into a career in the film and video production business. He began as a camera assistant and quickly became a director, then producer and eventually ran his own production company. The long hours and demands of this business eventually led him to stop painting altogether for nearly ten years. While the physical act of putting paint to canvas was suspended, Rohm said, "I never stopped painting in my mind. Painting was my life's desire and I longed to return to it."

Born and raised in the northeast, Rohm's return to painting was triggered in the early 80s when he moved to Texas; the broad vistas and bright, hard sky of the southwest opened up before him. Here was a landscape of stark simplicity and solitary beauty. Bob began to cut back on his production business in order to paint part time, and, in a few short years he became a full time artist.

Rohm lectures, demonstrates and teaches painting workshops. A signature member of the Oil Painters of America, and the Pastel Society of America, he has exhibited in national and international shows and has won many awards. His art and teachings have been featured in many publications and can be found in numerous corporate and private collections internationally.

SPECIAL THANKS TO OUR SPONSORS & SUPPORTERS

BENEFACTOR - Contribution valued at \$500 or more

Terry Ludwig Pastels

Jack Richeson & Co.

PATRON - Contribution valued at \$250 or more

Pat Berrett

Southwest Art Magazine

Great American Art Works

Anita Louise West

Richard Muldoon Memorial

Winsor & Newton

Savoir-Faire (Sennelier)

ASSOCIATE - Contribution valued at \$100 or more

Airfloat Systems, Inc.

Industrial Electric Automation, Inc.

Ampersand Art Supply

Judson Plein Air Outfitters

Artisan/Santa Fe

Richard McKinley

Artist Merchantile, Inc. (Schmincke)

New Mexico Watercolor Society

Bardean Gallery Inc.,

Pastel Society of America

Cheap Joe's Art Stuff

Plein Air Painters of New Mexico

Karen Cooper and Dwight Barnett

Rio Grande Art Association

Daniel Smith Artist's Materials

The Artist's Magazine

Framing Concepts

The Collector's Guide

H. K. Holbein, Inc.

The Pastel Journal

FRIEND - Contribution valued at less than \$100

Blick Art Materials

Langell's Art Supply

Dakota Art Pastels

Mount Vision Pastels

El Mirador Fine Framing

Bob Rohm

El Mirasol Frames

Diane Townsend Pastels

Huechroval Corporation

Catalog Design: Marilyn Drake
Printing: Bare Bones Graphics

ACCEPTED ARTISTS FOR 2008

80 Artists Exhibiting 139 Paintings

SHARON ADAMY

Alto, NM

Running Late - \$1,200

Touring Santa Fe - \$1,200

DONNA ALDRICH

Eagar, AZ

Meteor City - \$450

ROGER AMBROSIER

Evergreen, CO

Mist - \$700

Moon Oaks - \$700

Ware's Pond - \$850

JANET SHAW AMTMANN

Santa Fe, NM

Bosque Interlude - \$1,000

Rio Grande Overlook - \$1,000

PATTI ARBINO

Northridge, CA

Defiant - \$700

DIANE ARENBERG

Mequon, WI

Chamisa Everywhere - \$2,400

Holding Me Captive - \$2,800

The Strong Silent Type - \$2,800

BILL BAKER

Corrales, NM

Faces - \$9,500

Looking On - \$2,800



Defiant

PATTI ARBINO

PHIL BATES

Myrtle Creek, OR

Lassen Afternoon - \$1,000

BETHANNE BETHEL

Bernalillo, NM

Madonna Series #1 : Encircled - \$650

STEPHANIE BIRDSALL

Tucson, AZ

Eggspiration - \$2,400

Wentworth Wash - \$950

SARAH BLUMENSCHHEIN

Albuquerque, NM

Concerto with Cherries - \$900

Still Life with Lemons - \$1,450

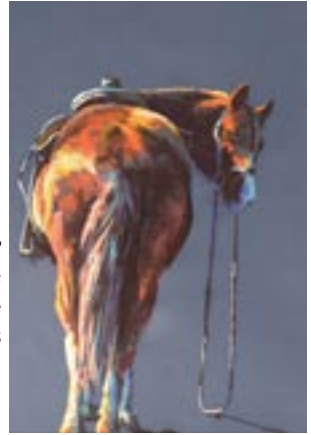
KE'VIN BOWERS

Santa Fe, NM

Don't Let the Sun Get in Your Eyes - \$1,375

Now What? - \$3,200

Stand Over Me in Silence - \$3,700



(from top)

Now What?

Don't Let the Sun Get in Your Eyes

Stand Over Me in Silence

KE'VIN BOWERS

KERRY BROOKS

Quincy, IL

Hide - \$1,100

Peach Ribbon - \$900

Wrapped - \$800

LYLE BROWN

Albuquerque, NM

Old El Cerrito - \$950

BILL CANRIGHT

Rio Rancho, NM

American River - \$450



JANE CHILTON

Grants, NM

Heaven and Earth - \$350

Melt Down - \$290

My Heart Breaks Open - \$450



BARBARA CLARK

Corrales, NM

Acoma Series #3 - \$750

Acoma Series #8 - \$325

Ten Day Vacation - \$850

PAUL COKER, JR.

Santa Fe, NM

Max - \$500

NORA DE ARAGON

Albuquerque, NM

Fascination - \$2,550

Silent Lives - \$2,750

FRED DAVENPORT

Tempe, AZ

New Windsor Hotel - \$350

DIANA DESANTIS

Whitestone, NY

Lititia - \$5,000

JOHN PHILBIN DOLAN

Northfield, IL
Dignity - \$700

MARY ANN DONOVAN

Bernalillo, NM
Far from the Maddening Crowd - \$225



Far from the Maddening Crowd
MARY ANN DONOVAN

MARILYN DRAKE

Albuquerque, NM
Red Socks - \$465
Sonnets - \$525
The Poet - \$595

CHARLES "BUD" EDMONDSON

Albuquerque, NM
Bill's Old Truck - \$1,500
Rocky Point Shrimp Boats - \$1,500
The Sky Above - \$1,500



Rocky Point Shrimp Boats
CHARLES "BUD" EDMONDSON



Winter at the Ponds

DIANE EDWARDS

DIANE EDWARDS

Fort Collins, CO
Winter at the Ponds - \$895

PAMELA FIEDLER

Santa Fe, NM
Afternoon Repose - \$3,500
Want - \$3,500

Want
PAMELA FIEDLER



LISA FRICKER

Lakeport, CA
On Her Mind - \$2,800

COLLIN FRY

Norton Shores, MI
Pride - \$875

ELIZABETH GREENLEE

Los Ranchos, NM

Clear Ditch, Early Spring - \$1,285

Mountain Stream - \$1,400

LEILA HALL

Albuquerque, NM

Spring Mustard - \$550

LYNNHARTENBERGER

Placitas, NM

Lakeside Aspens - \$1,200

White Wood - \$1,500

RICHARD A. HAYEK

Kansas City, MO

Red Hills Cedars - \$650

Towards the Cimarron - \$425

RALPHIE HENDRIX

Redway, CA

Converging - \$1,275

River Rock - \$565

KATHERINE HENRY

Placitas, NM

Rhapsody in May - \$925

JUNE HOLLOWAY

Fort Worth, TX

Still Life with Onions - \$1,500

KATHY IMEL

Westminster, CO

Desert Solitaire - \$875

Let Sleeping Geese Lie - \$1,350

BILL JAMES

Ocala, FL

Luckett's Barn - \$3,800



Georgia's Garden (top)

Hot Rocks of Ghost Ranch (bottom)

LIVE JOHNSON

LIVE JOHNSON

Estes Park, CO

Georgia's Garden - \$345

Hot Rocks of Ghost Ranch - \$395

Taos Christmas Magic - \$315

RICHARD JONES

Jacksonville, FL

Violets are Blue - \$900

VASILI KATAKIS

Albuquerque, NM

Hibiscus Luna - \$1,200

Odonata - \$1,500

SUSU KNIGHT

Santa Fe, NM

Rio Running High - \$600

REBECCA KOEPPEN

Ignacio, CO

Floating, Swirling, Reflecting - \$1,500

Tree Shadows on the River - \$1,730

We're Outa Here - \$1,000

JAKKI KOUFFMAN

Santa Fe, NM

Cove at the Shrine - \$2,900



Cove at the Shrine
JAKKI KOUFFMAN

PATSY LINDAMOOD

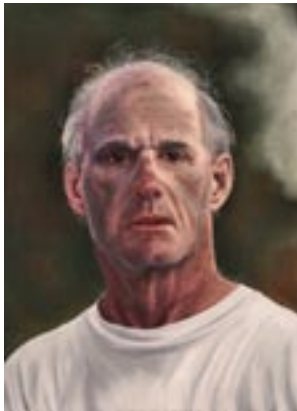
Gainesville, FL

Leopard on Alert - \$3,400

The Look of Labor - \$2,000



Leopard on Alert
PATSY LINDAMOOD



The Look of Labor
PATSY LINDAMOOD

MARGI LUCENA

Socorro, NM

High Desert Oasis - \$1,200

The End of Summer - \$600

MIKE MAHON

Santa Fe, NM

Charlie - \$1,152

Warming to Winter - \$924

MARIE MAINES

North Richland Hills, TX

Church Pews - \$850

Oxford Water School/Early Morning - \$850

Oxford Water School/Afternoon - \$850

LINDA MANION

Albuquerque, NM

Before the Race - \$2,200

Santiago - \$1,800

SEPTEMBER MCGEE

Laguna Beach, CA

Café Series - Chardonnay Thoughts - \$3,500

Piano Series - The Red Dress - \$3,000



Piano Series - The Red Dress
SEPTEMBER MCGEE

MARYANN MCGRAW

Placitas, NM

View from Double Eagle - \$700



View from Double Eagle

MARYANN MCGRAW

NANCE McMANUS

Tijeras, NM

Hawkwatch - \$3,000

CECELIA McROBERTS

Rio Rancho, NM

Red Square Abstract - \$375



Red Square Abstract

CECILIA McROBERTS

LEE McVEY

Albuquerque, NM

Arroyo Wall - \$925

Dry Creek Bed - \$800

Sunny Arroyo Bank - \$925

MALINDA L. MENKE

Sandia Park, NM

Stones - \$350

DAN MICHAEL

Mechanicsville, VA

Edge of the Woods - \$600

FRED MILLER

Albuquerque, NM

A Quiet Place - \$1,420

Curly - \$800

CAROLINE MONTAGUE

Athens, GA

Algae Bloom - \$1,800

The Edge - \$1,800

Tidal Flats - \$1,800

PAUL MURRAY

Santa Fe, NM

Passage - \$1,950

Sunrise / Rancho de Taos - \$850

DAVID NOTOR

Carbondale, CO

Canyon Light - \$800

Near the Dock - \$600

Sunset - \$1,000

PAULA O'NEIL

Stanley, NM

Road to Galisteo - \$850

PEGGY ORBON

Albuquerque, NM

Bosque Summer - \$325



Bosque Summer

PEGGY ORBON

MATTHEW PEAKE

Saxtons River, VT

Bearing Fruit #14 - \$540

Bearing Fruit #17 - \$540

Bearing Fruit #18 - \$540

ANDREA PEJEAU

Hilton Head Island, SC

Kate - \$800

CHERYL POWELL

Kemersville, NC

Seat Generations - \$380



Seat Generations

CHERYL POWELL

Glen Canyon Evening
NANCY SILVIA

SHARON QUARLES

Tucumcari, NM

Reflected Memoirs - \$1,100

FLORENCE ROWELL

Silver City, NM

Knight Peak - \$825



Knight Peak

FLORENCE ROWELL

WILLIAM SCHNEIDER

Crystal Lake, IL

Evening Chore - \$1,975

Jenny Tan - \$2,100

Unfinished - \$1,700

KAREN SERVATT

Albuquerque, NM

Wings of the Dawn - \$300

NANCY SILVIA

Santa Fe, NM

Glen Canyon Evening - \$2,200



LORI SNABLE

Santa Fe, NM

Bistro - \$600

Pizza My Heart - \$600

Plaza Restaurant - \$600



Pizza My Heart

LORI SNABLE

LORRAINE TRENHOLM

Ignacio, CO

Flock of Pots - \$1,800

DONNA VAN LEER

Los Lunas, NM

Following a Hard Day of Being a Swan - \$725



Following a Hard Day of Being a Swan

DONNA VAN LEER

SERGIO J. VISCOLI

Albuquerque, NM

Kyoto at Dusk II - \$900

Rainy Night at the Frontier - \$900

Red Rock Road en Plein Air - \$400

BONNIE WILLIAMS

Brookeland, TX

First Snow - Carbon Mountain - \$875

Panhandle Gold - \$875

CLAUDIA WILLIAMS

Santa Fe, NM

Two Pines - \$795

ENID WOOD

Pittsburgh, PA

High Noon - \$1,200



High Noon

ENID WOOD

DONNA YEAGER

Overland Park, KS

Golden Girl - \$1,200

SEUNG YOUN

Albuquerque, NM

Shady Lake - \$750

Valerie's Flower - \$450

ALFRED ZERRIES

Huntington, NY

Pride & Joy - \$8,500

Yellow Rapper - \$10,000

Why is Pastel Special?

A particle of pastel pigment seen under a microscope resembles a diamond with many facets. Therefore, pastel paintings reflect light, like a prism. No other medium has the same power of color or stability. Properly framed, pastel paintings are one of the most permanent painting mediums.

The painting medium is created from the same pigments as those used in watercolor and oil paints; only the binder is different. Gum tragacanth is used to bind the pigments of pastels, while gum arabic binds the pigment for watercolors and linseed oil is the binder for oil paints.

Soft pastels are available in three forms: the round or square sticks, created with only enough binder to hold them together; the slimmer sticks, which are harder and created with more binder; and the pastel pencils, which have the most binder and are the hardest form of soft pastels.

Pastels may be applied to a multitude of supports, including various types of papers and cloth. Popular choices are sanded paper, boards coated with marble dust and rough finished rag paper, which is available in a wide variety of colors to complement or contrast with the painted image. The surface may be underpainted with acrylic, gouache, oil paint or watercolor. Each artist chooses his or her personal technique or style for the specific requirements of an individual painting.

Generally, finished pastel paintings are not sprayed with fixative; rather they are framed using a spacer or mat between the painting and the glass.

Notes



Still Life with Onion

JUNE HOLLOWAY

Following a Hard Day of Being a Swan

DONNA VAN LEER





Clockwise from above: *Lititia* by DIANA DESANTIS
JENNY TAN by WILLIAM SCHNEIDER
BEARING FRUIT #17 by MATTHEW PEAKE

17th Annual National Pastel Painting Exhibition



This entire exhibition catalog, plus color images of all award-winning paintings in the exhibition, are posted on the Pastel Society of New Mexico website. The website also has more information about PSNM, including gallery pages showing the work of many of our members, links to other arts organizations, and listings of future PSNM exhibitions.

Pastel Society of New Mexico

PO Box 3571 • Albuquerque NM 87190-3571

www.pastelsnm.org