



HIGHlight

April 2010

From the President...

Dear PSNM Friends —

A few weeks ago, tragedy struck one of our members, Jeanne Weitz, when her son was killed trying to prevent the theft of his car. Jeanne was PSNM president in 2003 and, for a number of years, a regular contributor to our newsletter, writing reviews of our monthly demonstrations. A memorial service for John, on what would have his 61st birthday, will be held on Friday, April 23rd at the Historical Village Church in Tijeras. The service starts at 11am.

On a happier note, plans are rapidly moving ahead for the Signature Member's show to be held at the Millicent Rogers Museum in Taos from May 22 to June 27. It is a great location and a great time to have an exhibition in Taos (the show currently hanging has lots of red dots). Likewise, Enid Sorenson has

INSIDE...

pg 2 - Officers and Chairs, Member News
pg 3 - Program Review
pg 4 - Workshops
pg 6 - Call for Entries

started planning for the Small Works show. The major issue needing resolution is "How do we jury the paintings?" The current thinking is to use a jury of PSNM Signature Members or PSNM Distinguished Pastelists. What do you think? Enid would appreciate your input.

Finally, Spring at last is busting out all over. It's time to break out your plein air gear and get to painting the great outdoors. As artists we are blessed to live where we do, amongst a fabulous mix of scenery bathed in incredible light. HAPPY PAINTING!

— Fred Miller

Monthly Meeting at the Albuquerque Museum

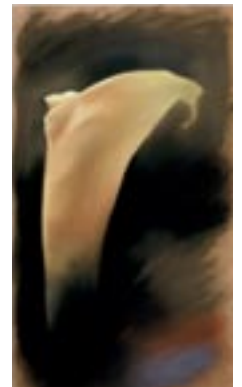
Saturday, April 10 • 10 - Noon

Painting the Calla Lily - A demonstration by Vasili Katakis

Tiffany, Rivera, Hartley, Mondrian, O'Keeffe, Demuth, La Farge, Man Ray, Schnakenberg, and countless others have captured the image of the Calla.

The Calla has made a unique contribution to the artistic study of the floral theme. It is simple yet elegant, masculine yet feminine. The Calla is also one of Vasili's favorite subjects. He has painted all his life and the effects of light and nature have become a constant fascination for him. His work is meticulous. It has the ability to capture nuances unseen by the human eye, but perceived by the human spirit. He will share some of the techniques that have become a trademark of his talent: shaping, color, and blending.

Vasili has taught at Chicago's Columbia Collage and has won numerous National Awards. He plans on devoting more time to doing workshops. To see more of his work, visit his website at vasiliart.com



Coming Up... May 8 - Mike Mahon will do a demonstration.

PSNM Officers & Committee Chairs

President	Fred Miller
Vice President	Gwen Wilemon
Treasurer	Mack West
Secretary	Carol Lovelady
Past President	Elaine Koehler
Communications	Nicholas Tesluk
Corresponding Sec.	Kathleen Dietz
Evaluation	Lee McVey, Peggy Orbon Enid Sorenson
50/50	Ann Gladstone
Librarians	Linda Bonds, Panola Lisle
MasterWorks Rep	Panola Lisle
Membership	Gaye Garrison
National Show	Beverly Snyder, Sally Prince
Newsletter	Marilyn Drake, Alice Flitter
Programs	Maryann McGraw
Program Review	Teri Gall
Publicity	Diana Stauffer
Refreshments	Constance Gehring
Signature Membership	Leila Hall
Website Manager	Marilyn Drake

* To send emails to people on this list, go to www.pastelsnm.org then click on Contacts.

MasterWorks of New Mexico April 10 - 29, 2010

Hispanic Arts Center at Expo NM, Albuquerque

Opening Reception
Friday, April 9th
from 5:00-8:00pm

FREE Pastel Demonstration
by Doug Dawson

Sunday, April 25 at 9 am at Expo NM

If you are interested in being a sales rep, being in charge of beverages, or hosting during reception on April 9th, please contact Sharon Jensen at ssmjens@aol.com or Peggy Orbon at morbon113@comcast.net

Member News

Colette Ody Smith has been quite busy since last fall and just finished three paintings for what is called the Sacagawea Award, which is given to two women for their leadership in the Milwaukee area each year. She got to paint anything she chose, basing her inspiration on the story of Sacagawea (of the Lewis and Clark Expedition). The two women each get artwork and there is an archived collection of such works from the last 20 or so years, housed at a local college. Colette used gold leaf to delineate the path in the pieces and while she really wanted the effect, it sure made things more of a challenge.



Terri Ford is one of four of the top pastel artists in northern California who will be exhibiting together in Things Remembered, a two-month show at the Knowlton Gallery from March 2 - April 24. The other artists are Kim Lordier, Gil Dellinger and Clark Mitchell. All four artists are nationally collected members of the Pastel Society of America and have received numerous awards for their work. Knowlton is located at 115 S. School St., Lodi, CA. 209-368-5123 Open: Tues - Sat & Most Sundays from 11 am - 5 pm.

Ruth Marcanti, a new PSNM member, offers an Artist Retreat in the scenic Jemez Mountains, just 60 minutes from Albuquerque and 75 minutes from Santa Fe. Jemez Art Retreat is 2 miles south of the village of Jemez Springs with easy access off Highway 4 and a 5 minute walk to the river. There are two guestrooms and kitchen and parlor. Easels and classes can be provided, if desired.



For more information, contact Ruth Marcanti at: jemezartretreat@gmail.com (10% discount for psnm members)

March Program Review

by Teri Gall

James Roybal - Underpainting Demonstration

Santa Fe artist, James Roybal has been creating art since high school, when he started casting bronze. By the time he was in college, he was entering juried shows with his oil paintings and sculpture. Fast forward, to 1995, when James studied under Albert Handell, to add pastel painting to his arsenal of tools for creative expression. Today, he is known for his bright, colorful landscapes, that dance on the wall, as well as his oils and bronze sculpture.

On March 13th, James shared with us how he achieves that accidental/on purpose look, typical of his loose pastel style. James uses Kitty Wallis Professional grade sanded paper, dry mounted on board. He begins by applying a pastel under painting, using Nupastels. He prefers them because of their hardness, their color variety, and the ability to use their edges. He works very fast, covering the entire sheet with color in various shapes, but no detail. Hard pastels will not use up much of the paper-tooth. As he was applying the pastel, he would tell us “this is where the water is, these are the trunks, and this is part of the bank.”



At this point, the under painting is totally abstract. He has confidence that the Nupastels are not taking up much of the surface tooth. This work still has a future!

Next, he'll lay the painting surface flat and use a brush to splash alcohol in 5-6 places, then tip up the mounted-paper and allow the color to run down the surface. He'll turn the paper 90 degrees, several times to make it look like an all over pattern. When the alcohol is nearly dry, he'll do the same thing with water, splattering the paper then turn it several times, creating an interesting pattern. To move the work forward quickly, he'll use a hair drier to dry the paper and seal in the background colors.



Using his reference photos, James begins to sketch in some of the darker defined areas, using a soft pastel and pressure. He works the whole surface, indicating locations for key compositional elements. He is not afraid of black. He says that if he finds that he's been too liberal

with black, he'll go over it, later in the process, with some medium value pastels. He works very quickly, building up his layers and not committing to any one thing as a way-finder. He'll pick up a color and stroke it in several places on the paper, then do the same thing with the next color. He learned in his college years, that “every color has every color,” meaning that every color used has to be in many places of the painting to tie the composition together. He spends a lot of time developing the foliage on trees. When that is finished he colors the sky holes of the trees brighter than the sky because that is the way the eye perceives it.

Because the trees are painted very loosely, the earth, water and sky gets the same treatment. He likes using purple and blue for secondary shadows and is careful not to over define anything. He doesn't like continuous lines, his lines are suggested, so that the eye can create them. He believes in the interaction between the viewer and the painting and lets that happen. You can tell when watching him paint that he's having fun and the right side of his brain is engaged. I think this state is otherwise called “the zone”. James finishes his work in an astonishing 50 minutes, though he says that in his studio he'll finish a painting in an hour and a half.



Photos courtesy of Cecilia McRoberts

James' work is in many collections throughout the US, Canada, England, Australia, Germany and Mexico. He has had one-man shows in New Mexico, Colorado, Texas, California, Montana, Oklahoma and Florida. He is with galleries in Texas, Florida, Colorado, and three in New Mexico. They are Alexandra Stevens Fine Arts in Santa Fe, Four Corners Gallery and Walden Fine Art in Taos.

If you want more information about James, go to his website: www.jamesroybal.com

Workshops

LISTING POLICY: All new announcements will be published with as much detail as space will allow. Repeat listings will be abbreviated. Deadline for submissions is 15th of month preceding next issue.

Please send your listings for classes, events, workshops, or news via email to: Alice Flitter - awflitter@aol.com

To find out about other workshops, shows, etc. check magazines and online sources. Use Google to search for additional information.

Clive Tyler

National Show Workshops

Tues, Wed, Thurs - November 2, 3, 4, 2010

(3 spots left)

Sat, Sun, Mon - November 6, 7, 8, 2010

(5 spots left)

**Tuition: \$295, PSNM Members
\$325, non-members**

Deposit: \$100 due by July 15

Balance due by September 1

Clive will focus on design aspects necessary to create dynamic landscape paintings. Lots of one-on-one attention, as well as many opportunities to review and implement the principles taught. All levels of experience welcome...there is always something new to learn.

Learn more about Clive at: www.clivetyler.com

**To Register, send an email to Marilyn Drake
at: psnm.nswkshop@gmail.com**

TAUGHT BY PSNM MEMBERS

NEW! Marilyn Drake Workshop

May 13 - June 3 • Albuquerque, NM

4 Thursdays, 1 - 4 pm at The Artist Studio, Hoffmantown Shopping Center at Wyoming and Menaul.

Basic Figure Drawing, including proper proportions, how to measure, foreshortening and contouring of form.

Tuition: \$110, including tax. To register call 505-400-2571 or email: marilyndrake@comcast.net

NEW! Colette Ody Smith Workshop

Aug 9 - 11 • Fish Creek, WI

Paint Like You Mean It: Expand Your Approach to Pastel

Explore alternative approaches to pastel as Colette guides you through discussion, reflection, experimentation, and newly found ways to apply pastels which will rejuvenate your process. This workshop is for students who are comfortable with pastels, or whose experience in another medium will carry over into their exploration with pastels.

For examples of Colette's work, see her website:

www.coletteodya.smith.net

Workshop ID: PD1040 Tuition: \$345

Contact: Peninsula Art School, 920-868-3455 or info@peninsulaartschool.com

Lee McVey, PSA Workshops

April 1 - May 6, 2010 • Albuquerque, NM

6 weeks on Thursdays, 1 - 4 pm at The Artist Studio, Hoffmantown Shopping Center at Wyoming and Menaul. \$135 tax included. Register with Lee at lee@leemcvey.com or 505-884-5566

October 1-3, 2010 • Edgwood, NM

3-day plein air at Starlight Ranch. \$300 tuition including tax. Lodging available at Starlight Ranch. Register at <http://starlightranchnm.com> 505-281-6839, or email: starlightranchnm@aol.com

For questions or more info, call Lee 505-884-5566 or email: lee@leemcvey.com

Jakki Kouffman Workshops

Master Pastelist, PSA; PAPNM, Signature Member

May 9 - 13, 2010 • Abiquiu, NM

September 20 - 24, 2010 • Taos, NM

Details at www.jakkikouffman.com

email: art@jakkikouffman.com or call: 505-466-1800

Paul Murray Workshops

May 10 - 14, 2010 • Santa Fe, NM

Santa Fe School of Art. For information, go to www.santafeschoolofart.com

July 12 - 16 / September 27 - Oct. 1, 2010 • Taos, NM
for the Taos Art School. www.taosartschool.com

Nance McManus Workshops

May 15 & 16 • Albuquerque, NM

"PASTEL CAMP" 2-day intensive class at the New Mexico Art League. For more information, go to: www.newmexicoartleague.org/mcmanus_pastel_camp.htm

Mike Mahon Workshops

May 12-14, 2010 • Rio Rancho, NM

June 10-12, 2010 • Amarillo, TX

July 14-16, 2010 • Santa Fe, NM

Aug. 11-13, 2010 • Santa Fe, NM

Sept. 22-24, 2010 • Taos, NM

NM workshops are plein air. TX workshop is Portrait/ Draw & Paint. All of Mike's workshops emphasize the step-by-PROCESS of painting and are designed to help the artist maintain control of the painting, which makes painting more enjoyable, and ironically allows for more spontaneity!

Details on Mike's website at: www.mmahon.com
email: art@mmahon.com; phone: 505-473-1098

Maggie Price, PSA Workshops

Both indoor and plein-air workshops; some combine both. Indoor classes designed to help create better paintings from photographic reference; outdoor classes specialize in plein-air techniques. Beginner to advanced. **April 5 - 9, 2010** - Amarillo, Texas. Three days indoors and two days outdoors (weather permitting). Participants can register for either just the first three days or all five days. Sponsored by the Amarillo Art Institute; contact Judy Neill, jneill@amarilloartinstitute.org for more information.

April 19 - 23, 2010 • Sautee, GA

In mountains of northern Georgia, about two hours from Atlanta. Contact Cynthia Whitney, 706-878-9943, or email cwhitney@hemc.net.

May 3 - 7, 2010 • La Conner, WA

Sponsored by LaConner Art Workshops. Indoor, technique-intensive workshop to boost your pastel skills. Contact Robyn Williamson, robyn@LaConnerartworkshops.com or 369-416-6556, ext. 5

May 28 - 30, 2010 • Denver, CO

Indoor, technique-intensive to boost your pastel skills at Ludwig Studios in Littleton.

June 7 - 11, 2010 • Pollock Pines, CA

Plein air painting in the foothills of the Sierras, along a spectacular river and other nearby locations.

October 1-11, 2010 • Juzcar, Spain

Stay in a tiny village at a lovely hotel and take day trips to surrounding villages and painting spots. Two day trips to larger cities (Ronda and Granada) round out the experience of Andalucia.

For more information or to arrange a workshop in your area, contact Maggie at pstudios@cablone.net, 505-294-7752, or visit www.MaggiePriceArt.com

Terri Ford Workshops

June 1 - 10, 2010 • South of France

In the gorgeous Lot Valley. Beautiful landscapes, vineyards, charming villages. Contact Terri at 408-286-3801

or email tford@terrifordart.com

Nov 6 - 8, 2010 • Roseburg, OR

Held in conjunction with the Pastel Society of Oregon's 17th Biennial Juried National Exhibition.

\$300 for PSO Members, \$350 for Non-Members.

Payment in Full or \$100 Deposit due before July 2, 2010.

Send to PSO, PO Box 105, Roseburg, OR 97470

Contact: Connie Noah: 541-673-7192 or

connie@renoah.com

Visit Terri's website at: www.terrifordart.com

Terri also offers private instruction by appointment.

TAUGHT BY OTHERS

NEW! Alicia Sotherland Workshop

August 23 - 27, 2010 • Killarney, IRELAND

4 day pastel workshop, focusing on portrait and figurative painting. Special room rates offered at 4-star hotel, see: <http://www.lakehotel.com/>

Tuition: \$400 For more information about this and other workshops, contact: aliciasotherland@hotmail.com

NEW! Lesley Rich Workshop

September 15 - 25, 2010 • Venice, ITALY

Plein air painting at San Marco and the Grand Canal, Burano, Murano and near the Rialto bridge. Stay in a small family owned hotel on a canal in the Dorsoduro region, with gondoliers passing by the terrace. \$1980 includes instruction, 10 nights lodging, daily breakfast, and taxes. Limited to 16 artists. For more information, go to: <http://lesleyrich.com/BrochureVenice2010.pdf>
Email Lesley at: lesley@lesleyrich.com

NEW! Kewaunee Academy of Fine Art

Workshops • Kewaunee, WI

For more detailed information about any of our summer workshops, please email norma@kewauneeacademy.com or call 920-388-4391.

Sally Strand Workshops

September 3 - 5 & 6 - 8, 2010 • Grand Junction, CO

Two 3-day workshops in conjunction with the Pastel Society of Colorado's 6th Annual Mile High International Exhibition. For workshop info email: pencreasy@bresnan.net

Dakota Art's LaConner Art Workshops

31 Years of Educating and Inspiring Artists!

Call Now to Register: 1-888-345-0067 ext. 5

www.laconnerartworkshops.com

Call for Entries

EDITOR'S NOTE: Please send an email to Alice Flitter at awflitter@aol.com with complete information about any shows that will be of interest to your fellow PSNM members. Submissions must be received by 15th of the month preceding the issue in which you'd like the show mentioned.

*Remember, there are many shows and competitions listed on the internet, as well as the art magazines. So do some exploring on your own to see what is coming up. **To find out what ArtPerk currently has listed, go to: <http://www.artperk.com>***

Entry Form Deadline: April 1, 2010

Digital Deadline: April 8, 2010

Texas Pastel Society National Juried Competition/Exhibition June 2 - 29, 2010 at New Braunfels Art League, 239 W. San Antonio, New Braunfels, TX
Juror: Alan Flattmann

To download a copy of the prospectus, go to:
www.texaspastelsociety.com

Contact: Mary C. Lopez
email:texaspastelsociety@yahoo.com

Application Deadline: April 10, 2010

IAPS Scholarships

To download information and prospectus, go to:
<http://www.pastelinternational.com/COMPETITIONS/competitions-exhibitions.html>

If you have questions, call 530-644-4899.

Digital Deadline: April 26, 2010

International Association of Pastel Societies

Butler Museum, Youngstown, Ohio, in the Flora B. Giffuni Gallery

July 11 - August 29, 2010

Judge: Maggie Price

Jurors: Alan Flattmann, Liz Haywood-Sullivan, and Jimmy Wright

Prospectus on IAPS website: <http://www.pastelinternational.com/COMPETITIONS/competitions-exhibitions.html>

Application Deadline: May 1, 2010

Placitas Artists Series • Sept - June

Artists, would you like to show locally? Here is your opportunity. For the last 23 years, the Placitas Artists Series has been bringing excellent music and art to Placitas at the beautiful venue of the Las Placitas Presbyterian Church. Four Visual Artists have a monthly

show in conjunction with the musical concerts. To be considered, go to our website: www.placitasarts.org and download a Visual Arts Application Form, or send a SASE to Judith Roderick, 72 Overlook Dr., Placitas, NM, 87043

Digital Deadline: May 3, 2010

MidAmerica Pastel Society - 2nd National Open Exhibition

Aug. 26 - Sept. 25, 2010 in Merriam, KS

Juror/Judge: Lorenzo Chavez

Download prospectus at: www.midamericapastel.org

Lorenzo Chavez Workshops in conjunction with show:
Aug. 23 - 25 & Aug. 27 - 28, 2010

Digital CD Deadline July 7, 2010

56th Juried Exhibition at The Haggin Museum

Sept. 2 - Oct. 31, 2010 at The Haggin Museum, Stockton, CA

Juror: Margot Schulzke

For more info contact Teresa Hickey at:

elmhickey@sbcglobal.net

For entry forms, go to: www.hagginmuseum.org

Digital Deadline July 9, 2010

Pastel Society of Colorado 6th Annual Mile High International Exhibition

Sept. 3 - 25, 2010 at Western Colorado Center for the Arts, Grand Junction, CO

Juror: Sally Strand

\$5000 cash and merchandise awards. Entry fee: \$15 per painting for PSC members. \$20 per painting non-members. For prospectus SASE to Penny Creasy 2177 Meadows Ct., Grand Junction, CO 81507 or email: pencreasy@bresnan.net
www.pastelsocietyofcolorado.com

Digital Deadline August 27, 2010

Pastel Society of Oregon 17th Biennial Juried National Exhibition

Nov. 5, 2010 - Jan. 7, 2011 at Umpqua Valley Arts Association, Roseburg, OR

Juror/Judge: Terri Ford

\$5000 cash awards and sponsor merchandise.

Entry fee: PSO members \$25/3images. Non-members \$35/3images. For prospectus, send SASE to Pastel Society of Oregon, PO Box 105, Roseburg, OR 97470 or email Lora Block at: donandlora@hughes.net
www.pastelsocietyoforegon.com