



# HIGHlight

*December 2011*

## From the President...

The results of huge amounts of time and energy put into painting were evidenced at PSNM's 20th Annual National Pastel Painting Exhibition. And the questions always arise: "Why didn't I get in this year?" or, "How was I so lucky to get in this year?" I was very hopeful the day I took my 3 pastels in on that Friday — until I saw the other work leaning against the walls! Very disheartening.

Malcolm Gladwell addresses the elements of success in his book "Outliers", in which he talks about several hugely successful people or groups: Bill Gates, The Beatles, some Canadian youth hockey teams. Bottom line is, immense amounts of TIME and PRACTICE went into each of these person's or groups' success. He estimates 10,000 hours of sheer hard work!

There are some who already have approached that mark, but most of us have not. Keep working!

~ Leila Hall

PS - That book is very good reading...

## INSIDE...

- pg 2 - Officers and Chairs
- pg 3 - Membership Application Form
- pg 4 - Program Review
- pg 5 - Member News, Call for Entries
- pg 6 - Workshops

## Monthly Meeting at the Albuquerque Museum

**Saturday, December 10 • 10 - Noon**

### Annual Holiday Potluck & Special Surprise Program

*You are cordially invited* to bring something special to the party - appetizers, main dishes and "yum" — plenty of delicious desserts! Spend some quality time socializing with fellow PSNM members and sharing in the festive food you've all contributed and Maryann's treat!

## Time to Renew your PSNM Membership!

### Do it online — including convenient payment by credit card

- Go to [www.pastelsnm.org](http://www.pastelsnm.org) • Click on Membership, then click where indicated to apply and pay online.

### Or do it manually —

If you do not wish to complete the process of membership renewal online, you can:

- Print the Membership Application Form found on page 3 (or the downloadable one from the PSNM website).
- Complete and Mail, along with your check, according to instructions on the form.

### Add a Link to your own website from PSNM's website...

To take advantage of this service, check the appropriate box on the Membership Application Form and provide your website address. (*Don't forget to pay the nominal \$10 service fee.*)

Signature Members receive this service as part of their dues, but must follow all the same steps as all other members.

**Directions for submitting an image** can be found at: [http://pastelsnm.org/main\\_html/submit\\_link.htm](http://pastelsnm.org/main_html/submit_link.htm)

## PSNM Officers & Committee Chairs

President	Leila Hall
Vice President	Gwen Wilemon
Treasurer	Mack West
Secretary	Sally Prince
Past President	Fred Miller
Communications	Nicholas Tesluk
Evaluation	Carol Lovelady, Peggy Orbon Enid Sorenson
50/50	Ann Gladstone
Librarians	Linda Bonds, Panola Lisle
MasterWorks Rep	Jill Rushton
Membership	Gaye Garrison
National Show	Nicholas Tesluk
Newsletter	Marilyn Drake
Programs	Maryann McGraw
Program Review	Natasha Isenhour
Publicity	VACANT
Refreshments	Judy Allen
Signature Membership	Paul Murray
Website Manager	Marilyn Drake

\* To send emails to people on this list, go to [www.pastelsnm.org](http://www.pastelsnm.org) then click on Contacts.

## PSNM Election Results

### 2012 Officers

Leila Hall, President  
Wanda Portee, Vice President  
Constance Gehring, Treasurer  
Les Lampkin, Secretary

## New Signature Members

If you were not in attendance at the Opening Reception for the 2011 National Show, you probably don't know that these PSNM members have attained Signature status:

**Donna Aldrich, Katherine Irish Henry, Rebecca Koeppen, and Sergio J. Viscoli.**

Congratulations to them all!



### Clive Tyler Demo Images

Unfortunately these images were not included in the November issue's review of Clive's demo. You can find the review online at: [www.pastelsnm.org](http://www.pastelsnm.org) in the Newsletter section under Past Newsletters.





# MEMBERSHIP APPLICATION

or join and pay dues online at:  
**www.pastelsnm.org**

Membership is from January to December.  
Annual Dues should be paid by the 1st of January.

(All information provided is used only for PSNM business.)

*Please PRINT Responses Clearly!*

Name \_\_\_\_\_

Address \_\_\_\_\_

City, State, ZIP \_\_\_\_\_

Phone (home) \_\_\_\_\_

(work) \_\_\_\_\_

(cell) \_\_\_\_\_

Email \_\_\_\_\_

*Email address is essential in order to receive monthly newsletter, meeting notification, plus other timely messages.  
If you do not have email, a meeting announcement postcard will be mailed to you.*

Please check all applicable boxes.

- \$30.00** - Annual Membership Dues (with voting privileges)
  - New member
  - Renewing member
- \$40.00** - Signature Member (current Signature Members only)
- \$10.00** - Student Member (17 & under)

I *do*  / *do not*  want my contact information included in the PSNM directory.

## Link to Your Website from PSNM Member Artist Page

- \$10.00** - Annual Fee for Link to Your Website - FREE for Signature Members

Web Address: www. \_\_\_\_\_

There will be one sign up period per year - Dec thru Feb, corresponding with annual membership renewal. Web links will run from March of the sign up year to March of the next year. Those who join PSNM after Feb will have to wait until they renew their membership the following year. Directions for submitting your digital image, which will appear on the Member Artists page, can be found at: [http://pastelsnm.org/main\\_html/submit\\_link.htm](http://pastelsnm.org/main_html/submit_link.htm)

*Save a copy of the completed form and your check for your records.*

Mail Completed Form and Check (payable to PSNM) to:

MEMBERSHIP

PASTEL SOCIETY OF NEW MEXICO, PO BOX 3571, ALBUQUERQUE, NM 87190-3571

# November Program Review

by Nance McManus

*All painting is abstract, it must be organized.*

~ David Hockney

Dinah's Preferred Pastel Materials:

Surfaces: Ersta 700 (though, since this paper is no longer manufactured, this is now hard to find), UArt 600 (the manufacture's replacement for Ersta) mounted on foam or gator board.

Pastels: Schminke, along with Nu Pastel and Girault.

Frames: Omega Moulding

Dinah will be among the artists featured in the upcoming publication, "Art Journey America Landscapes: 89 Painters' Perspectives", North Light Books due January 12, 2012.

Though she is a Master Pastelist in the Pastel Society of America, pastel is not the only medium that Dinah expresses herself in or explores.

Her website is <http://dinahworman.com/>

## Dinah Worman's Presentation

If I understood correctly, Dinah Worman was willing to give a demo after having watched one of mine. So I guess it's only fair that I should attempt to write her review. Mind you... I am better at reading and research than I am at getting a painting anywhere near done in an hour.

Dinah's process presented at our monthly meeting is the push and pull of a series. Typically she uses the photos that she has shot only as reference but will take time to sketch a lot. The sketches are not necessarily preliminary thumbnails for her work but more to get as much information, exploration, and ideas on paper before getting back to her studio.

Dinah brought several framed paintings to show as well as working on one whilst talking about her process. Luckily she had brought several pieces that were related to the bigger piece she would demo for us.

This series of the Sangre de Cristos (Dinah lives in Taos) was being especially "manipulated" by moving the horizon line either way up or way down the page. It was very interesting to see the changes in focus with the horizon being shifted.

Dinah mentioned that it seemed that as she painted her series the next painting got more loose. That would make sense to me as one would get more familiar with the subject the need to render it perfectly would hopefully fall away to then capture the essence of either the image or what you were trying to "say".

I loved her throwaway line regarding her previous style of art: I can do "tight" pathetically well.

She started this demo with simple calligraphic dark lines (of Nu Pastel) enjoying the subtle diagonals that would

hopefully be supported in color, tone, variation, and a VERY high horizon line.

I am guessing that the surface was 18"x14" and that the base of the mountains was not 4½ inches from the top. Dinah pointed out that the mountains can either take *FOR EVER* to get right, or they are done in half an hour.

Before putting in distance icons that would also double as a way to move the eye around the surface she started with setting in the darks and giving the mountains some body.

Taking a moment to step back Dinah pointed out that her paintings read from the upper left to the lower right... as we read books. She also, even at this early point, has started to double check the composition.

"Doing series gets me in the zone... including working on more than one painting at a time."

After 25 minutes of working on the mountains Dinah "moved", or knocked back, the main diagonal with a *spag mump* (or packing peanut) and at 35 minutes she had filled in most of the foreground or the remaining 4/5s of the painting with varying values of several colors.

In pointing out that she likes UArt paper for the great edges and no need of blending Dinah honored many of the diagonal shapes by subtle color changes. The large shapes were defined only by the different colors... no lines.

*(I am now asking myself, "How can she talk and paint? I have learned about her thought processes, her shared-studio life, her current dog AND she has fielded questions. This demo has been full of most enjoyable diversions and learning!")*

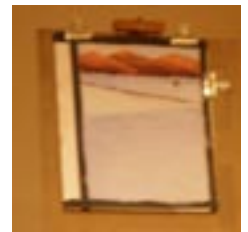
Back up to the dark shapes in the mountains with a lighter pastel under the trees at their base to help tie them together. Having to paint to the side of the surface for the sake of the audience viewing the demo she noticed that the mountains were getting a bit heavy and that when she got back to her studio she would probably brush the mountains out and remove some of the density that has built up.

At 40 minutes Dinah took a break and considered putting in a lower right hand element, up close, to keep the eye on the painting; possibly a human with dog or ravens.

And now a chance for more dialogue with the packed house that had come to this Saturday's demo.

"I buy frames by the case," Dinah announced. "I buy them in 10"x10" and 12"x12" too. The square format gives

*continued on page 6*



## Member News

**Depy Adams** received “Best of Show” for her oil painting “Mangosteen Row” in ¡Encantada! 2011, the Rio Grande Art Association’s annual juried oil & acrylic painting show. **Wanda Portee** won the “Plein Air Painters of New Mexico Award of Excellence” for “Morning Light, Hidden Lake”. The show runs through Dec 23rd (Tues-Fri 10-5 and Sat 10-4) in the African American Performing Arts Center, 310 San Pedro NE, Albuquerque NM 87108.



*Morning Light, Hidden Lake by Wanda Portee*

**Barbara Clark** was pleased to learn her painting “Commute in Blue” was awarded the Connecticut Pastel Society award on November 6th at the Maryland Pastel Society Show. **Janet Shaw Amtmann** received an Award of Merit for her painting “Shelter from the Storm” in that same show.

**Leila Hall** participated in the Los Ranchos Shop & Stroll on Saturday, Dec. 3rd showing off her Mexican oilcloth totes and her pastels.



**John deYoung** won a 1st place award in the recent NM Veteran’s Art Show for his pastel entitled “Joe Cool”. In the same show, **Wanda Portee** won 2nd & 3rd place for “Fall Swept” and “From My Garden” respectively and **Mack West** took 2nd place for his photo “Crash Boat Beach 1”.

**Monty Singer** won the National Show’s People’s Choice Award for “Tent Rocks”. **Paul Murray** won People’s Choice in Small Works Show for “Passages”. Congratulations to you both.

## Miscellaneous...

Use this link to see winners in the 2011 Pastel Society of America show: <http://www.pastelsocietyofamerica.org/2011PSAAwardWinners.pdf>

Rent artist Michelle Chrisman’s charming Taos “Casita de Artistas” for December, including Christmas. Call 575-613-0443 to book your stay! Or send her an email to request a flyer which gives rates and other important information: [mpchrisman@earthlink.net](mailto:mpchrisman@earthlink.net)

**Melody Sears** won Best of Show at the Plein Air Painters of New Mexico 6th Annual Paintout for her pastel painting “Canyon Contrasts” as well as a sponsor award. The paintout was in and around Socorro this year and the exhibit was on display at the Curious Crow Gallery, which is owned by PSNM members Margi Lucena and Natasha Isenhour. Other award-winning PSNM members were **Janet Shaw Amtmann**, 3rd place for “Before the Climb”; **Peggy Orbon**, RGAA award for “Sun Patterns”; Curious Crow People’s Choice went to **Elaine Koehler** for “Wetlands”. In the Quick-Draw, **Seung Youn** took 1st place and **Maryann McGraw**, 2nd for their pastels. All winning paintings can be seen on [www.papnm.org](http://www.papnm.org) by going to Public Exhibitions and clicking Past Exhibitions.



**Sara J. Chambers** is doing a free demonstration of oil sticks (aka Oil Bars) and palette knife oil for Artisan Santa Fe on Sat., Feb. 4, 2012 from 1:30 to 3:30 p.m. Please join her for the fun! Check out the paintings created with this exciting medium at [www.SaraJChambers.com](http://www.SaraJChambers.com).

## Call for Entries

**MasterWorks of New Mexico • April 6 - 28, 2012**

Entry Deadline: Standard Fine Art Division  
Friday, January 27, 2012, 5pm

Entry Deadline: Miniature Fine Artwork Entry Forms  
Saturday, March 17, 5pm

To get complete information and to download prospectus, go to: <http://masterworksnm.org/>

**28th Annual Ridgway Rendezvous Arts and Crafts Festival • August 11 and 12, 2012**

Applications Available Now!

Primary application deadline: May 1, 2012

The Ridgway Arts Rendezvous Arts and Crafts Festival is looking for fresh and exciting artists, craftspeople and food concessionaires for their annual juried show. This annual show is located at the junction of Highways 550 and 62 in SW CO.

For an application or more information, visit [www.weehawkenarts.org](http://www.weehawkenarts.org)

Write PO Box 734, Ridgway, CO 81432; Call 970-318-0150 or Email: [kentee@weehawkenarts.org](mailto:kentee@weehawkenarts.org)

# Workshops & Classes

**LISTING POLICY:** All new announcements will be published with as much detail as space will allow. Repeat listings will be abbreviated. Deadline for submissions is 15th of month preceding next issue.

Please send your listings for classes, events, workshops, or news via email to:  
[psnm.news@gmail.com](mailto:psnm.news@gmail.com)

**Albuquerque** and **Santa Fe** appear in **Red** to indicate workshops and classes which are held locally.

## Vasili Katakis Classes

**January 9 - February 27 • Albuquerque, NM**

New Mexico Art League, Mondays 1:30 - 4:30 pm

“**Floral Painting in Pastel**” Develop your own personal style through studies, demonstrations, photographs & life. We’ll examine plant structure, composition, lighting, color temperature and blending techniques. I will guide you in recognizing the difference between struggle for control and the freedom of play. Explore the unique beauty that nature can provide. All levels of skill & experience welcome. Tuition \$190 for members / \$210 for non-members. Contact instructor by email ([vasilikatakis@gmail.com](mailto:vasilikatakis@gmail.com)) or call 505-255-0313  
Please feel free to visit my website: [www.vasiliart.com](http://www.vasiliart.com)

## TAUGHT BY OTHERS

### Sally Strand Workshops

Check Sally’s website for complete schedule and updates: [www.sallystrand.com/Pages/Workshop.html](http://www.sallystrand.com/Pages/Workshop.html)

**February 16 - 20, 2012 • Fallbrook, CA**

Fallbrook School of the Arts. Contact: Brigitte Schlemmer 760-728-6383 email: [brigitte@fallbrookschoolofhearts.org](mailto:brigitte@fallbrookschoolofhearts.org)

**March 12 - 16, 2012 • Leesburg, FL**

Pastel Society of Central Florida. Contact: Sherese Mesko, 352-638-0973 email: [ShereseG@aol.com](mailto:ShereseG@aol.com)

## Dinah Worman Review - continued from page 4

me a chance to crop and edit from the rectangle when a painting is just not working.”

From the series she brought along, it looks like using the cropping method gives her a chance to get the most from a painting in the square frame without fretting over some small area or making any of it too precious.



We also got to talk about pricing. I am always fascinated about how people price their art work. Personally I charge by the square inch and not by how much time, materials, or how much I like a painting.

It was interesting to discuss how sometimes input on pricing can come from your gallery or even from an art festival organizer.

I think it is always a gift when another professional person in our field can offer some input to how we can be better painters.

How I wish this time with Dinah, generous Dinah, could have lasted the whole day. The only thing better than learning is having my curiosity sparked and catapult me back into my studio. Many, many thanks for your time Dinah!



## Volunteers Needed ASAP!!

Seeking REFRESHMENT and PUBLICITY Committee Chairs for 2012. Please contact Leila Hall if you are willing to head either of these committees, or if you are willing to take on any other tasks to help PSNM. Send emails to: [psnm.pres@gmail.com](mailto:psnm.pres@gmail.com)