



PASTEL
SOCIETY
OF
NEW
MEXICO

HIGHlight

July 2011

From the President...

Dear PSNM Friends —

Excerpted from “Art & Fear” by David Bayles and Ted Orland.

“In the end it all comes down to this: you have a choice... between giving your work your best shot and risking that it will not make you happy, or not giving it your best shot — and thereby guaranteeing that it will not make you happy. It becomes a choice between certainty and uncertainty. And curiously, uncertainty is the comforting choice.”

The book also talks about how an art professor told his first ceramics class in the fall that he would give half of them their grade based on the WEIGHT

INSIDE...

pg 2 - Officers and Chairs,
National Show News

pg 3 - Program Review

pg 4 - Call for Entries, Member News

pg 5 - Workshops

of their work at the end of the term, and the other half would be graded on their BEST piece. Guess who got the A's? The ones who did the most pieces, because they improved the most.

Message being, do a LOT of work and out of it will come your best.

— Leila Hall

Monthly Meeting at the Albuquerque Museum

Saturday, July 9 • 10 - Noon

Critiques by Paul Murray, PSNM/DP & Vasili Katakis, PSNM

Just in time to improve one's paintings for National Show entries, members are invited to bring their pastel paintings for a critique by two of our talented signature members. Before the critiquing begins, Paul and Vasili will explain what they will be looking for in each painting. To be fair and to keep things moving, a limited amount of time will be allocated per painting.

For ease of handling, please bring either framed paintings, or ones which are mounted to a board and have an easily removed protective covering. The paintings will be assigned numbers as they arrive and should then be placed up on the stage, since there isn't enough room in the seats, and besides, it would take up too much time to bring them up during the critique session.

Most likely the members' first paintings will all have 1s and Maryann McGraw will randomly hand them to Paul and Vasili. Each person will start with one painting to be critiqued. Depending on how many paintings are brought in, a second round of critiques may follow.

Coming Up... August 13 - Jason Horejs of Xanadu Gallery, Scottsdale

Pastels 4 Sale!

If you didn't completely blow your budget for pastels at IAPS, Anne Cox is offering a chance to buy more...

Pastels, both hard and soft, a large carrying box, pastel board and various paper supports. Even some PanPastels and various tools too.

Anne is located in the East Mountains and can send a detailed list to those interested. She would like to sell everything as one package for \$250. For details and pics, email Anne at: acox9mm@hotmail.com

PSNM Officers & Committee Chairs

President	Leila Hall
Vice President	Gwen Wilemon
Treasurer	Mack West
Secretary	Sally Prince
Past President	Fred Miller
Communications	Nicholas Tesluk
Evaluation	Carol Lovelady, Peggy Orbon Enid Sorenson
50/50	Ann Gladstone
Librarians	Linda Bonds, Panola Lisle
MasterWorks Rep	Jill Rushton
Membership	Gaye Garrison
National Show	Nicholas Tesluk
Newsletter	Marilyn Drake
Programs	Maryann McGraw
Program Review	Natasha Isenhour
Publicity	VACANT
Refreshments	Judy Allen
Signature Membership	Paul Murray
Website Manager	Marilyn Drake

* To send emails to people on this list, go to www.pastelsnm.org then click on Contacts.

PSNM Juried Shows

20th Annual National Pastel Painting Exhibition

Digital Entry Deadline: Monday, August 15

Jury Notification Sent: September 15

For Prospectus go to:

www.pastelsnm.org/main_html/national_show.htm

Nicholas Tesluk, Show Chair

thermite@nmia.com

3rd Annual Small Works Exhibit

Digital Entry Deadline: Wednesday, August 31

Jury Notification Sent: September 30

For Prospectus go to:

www.pastelsnm.org/main_html/small_works_show_app.htm

Questions, Contact Enid Sorenson

enids@comcast.net

NATIONAL SHOW NEWS by Nicholas Tesluk, National Show Chair

Our "Call For Entries" ad in the June issue of *The Pastel Journal* was enhanced by adding the PSNM logo. It didn't cost much extra, and since ours is the only one in the issue to feature a logo, it draws the reader's eye to it immediately upon reaching that page. We also had a full page ad in the June issue of *American Art Collector* in which eight of our great artists (Janet Shaw Amtmann, Jacquelyn Cattaneo, Marilyn Drake, Sharon Jensen, Lee McVey, Peggy Orbon, Mary Stovall and Dinah Worman) purchased space, each showcasing one of their fine works of art. Marilyn Drake created a beautiful layout for the advertisement and this ad had a twofold benefit. It gave each artist additional national recognition and also drew attention to our National Show and directed readers to our website in order to obtain the Prospectus. Since this was a special issue highlighting art in Santa Fe, we also received a free column, advertising our Signature Show, which included one of Marilyn's paintings.

There were a few artists who were disappointed that they found out about the advertisement plans too late and I will be contacting them, but I want to make sure that everyone is aware that we hope to once again be placing an ad in the October or November issue of *American Art*

Collector in time to advertise the National Show itself.

Janet Amtmann is interested in also placing an ad in *Southwest Art* during that time. Conceivably if we have enough interest, we can fill both ads. This is a great opportunity for national recognition.

We had flyers at the IAPS Convention and Exhibition with pull tabs at the bottom listing our website for Call For Entries. Visitors to IAPS devoured the pull tabs, so hopefully many pastellists who otherwise would not have been aware of our show will now enter. I have also been placing these flyers in many locations around Albuquerque and hope to get many up in Santa Fe. We hope to keep Entries Director, Peggy Orbon, busy with the influx of entries this year. Please get your entries in and get the word out to all pastel artists that you know.

We now have about twenty sponsorship submissions, which is about half the amount from last year. This month we will be calling the sponsors who may not have had the original letter directed to the correct person. I thank the many people who have volunteered to help make calls.

Bev Snyder has volunteered to be my Reception Director. I am very grateful for her help.

June Program Review

by Natasha Isenhour

Notan to Now... “how Nance McManus stole the ancient practice of dark-light and made it hers”.

When it was suggested to Nance McManus at the PSNM National Show that she consider doing a demo on Notan, she used it as an excuse to dig in deep and educate herself on the practice in a manner that would allow her to teach it. For me, Notan is a concept that seems to transcend words. But from a combination of cleverly presented visual artworks accompanying the information she was able to find, I know that my personal understanding was greatly enhanced.

As Nance began her quest for information, she soon realized in trying to reduce “Notan” to a simple definition, that first and foremost, it was a Japanese word for dark-light. Easy enough, but with further research the complexities of this ancient practice had broadened over time and she concluded it could be broken down into three areas of study. There was the Arthur Wesley Dow concise summation of Notan as “dark and light,” seemingly keeping with the definition as the concept. Another area presents Notan as an exercise that fleshes out a more visual application of cutting paper to see the dark and light as they relate to one another. This exercise presents “Notan-Structure,” which in a contemporary explanation, now would likely be described as “value structure.” In Nance’s lecture, these were parts #2 and #3 of her “Notan Trilogy.” I purposely saved #1 until last, because in this nebulous concept, it seemed to explain Notan as a sum of its parts. The Chinese/Japanese Study breaks it down as follows;

“*No*” referring to the “degrees” of depth, darkness, density or concentration, and

“*Tan*” referring to “pale, faint or fleeting.”

I felt a light bulb begin to flicker...

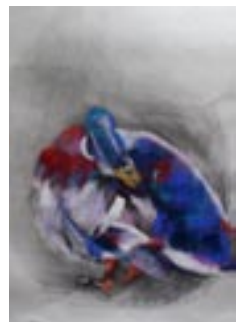
McManus explains, “The principle of Notan, as I am learning it, is the interaction between positive and negative space. Notan can be a practical application to design and I have found it essential, for me, in grounding a good painting... it is important that the dark and light shapes have equal support on the surface. In its purest form, at any given view, either light or dark can be the feature.” This relationship was illustrated beautifully as slide after slide of examples were put up on the screen. The most engaging was being shown a work in black and white, pouring over the weight and balance of this “Notan-View” of the work and having it followed by the work in color. This method of examining Notan really illuminated the concept.

Throughout the talk there was a great deal of history, from Katsushika Hokusai, a major influence in art in Europe around 1800, to Massachusetts native Arthur Wesley Dow’s discovery of Hokusai’s book and later collaboration with Japanese scholar, Earnest Fenollosa in the late 1800’s on the formal design elements of Japanese prints. Another slide revealed the Notan concept in “Banana Flower in Charcoal” 1933, by Georgia O’Keeffe, as she was influenced by Dow’s work on the subject at Columbia University around 1915. Another good example was a series of slides depicting dark rounded shapes representing “rocks,” and their distribution according to weight and balance juxtaposed against the visualization of water flowing around them. Clearly the fluidity of the composition is heavily dependant on the arrangement of the “rocks,” or, dark masses. This example brought full circle, the understanding of why a great composition relies heavily on negative space. “I find that one of the hardest things to teach in my classes is, more darks. I believe that it is not just the darks to make the lights look brighter, but more darks are part of the composition and make a better structure for the motif.” Nance ended the slide show with a flattened black and white image of her own pastel portrait of a swan painted from life, “Preening,” followed by a slide showing the full color view. You could hear the reaction from the audience when the color was revealed. The examples clearly brought the concept home for many of us.

For Nance, the notion of light and dark holding equal importance is a “warm and fuzzy place” for her. I imagine as each of us left the lecture we could relate to at least some degree of why that is so. As Margi Lucena and I were driving back home, we had a lengthy discussion of how we actually practiced this concept in the execution of our own work. But having brought to light a deeper understanding, I think we can benefit by being consciously aware that what we are really doing, fundamentally, is working toward that balance.

If you would like to see a visual on Notan, please go to <http://www.youtube.com/watch?v=-IFiH6zH68> This video was made by an art teacher for her class about Notan. In the resources section at the end, it shows a good book about Notan by Bothwell and Mayfield.

And don’t neglect to check out more of Nance’s work at <http://www.nancemcmanusstudio.com/>



Member News

Seung Youn has been elected to Signature member of the Pastel Society of America.

Bill Canright, Maggie Price, and Bonnie Williams were 2011 "IAPS Master Circle" Medallion recipients. **Paul Murray** is one of the newest honorees having been accepted into the requisite number of IAPS Exhibitions and he will receive his medallion at IAPS in 2013.

Karen Cooper has been invited by Kenneth Meek, Director, Woolaroc Museum in Bartlesville, OK to have a One-Person Exhibition and Sale. It will be Karen's first solo exhibition in a Museum of Fine Art. Her work will fill the Bunkhouse Gallery for six weeks beginning May 5, 2012 and running through June 17, 2012. For more information about Karen, go to: www.artbc.com/

Terri Ford's award winning painting "Morning Vista" from the 2011 Carmel Art Festival Plein Air Event is shown at right.



Nance McManus has 2 pieces in "Kinesis" the next show running from July 8th to August 13th at the Fuller Lodge Art Center in Los Alamos.

Janice Parker Muir's oil, pastel and acrylic paintings will be displayed in a solo exhibit titled, "Fields & - Scapes," at Karen Wray Fine Art Gallery in Los Alamos from July 7 through August 12, 2011, with a reception on July 7 from 5 - 7 pm. www.karenwrayfineart.com

Carol Ast was awarded the Degas Pastel Society Award for her painting "Haystack Rock, Canon Beach, OR" by juror Terry Ludwig at the Pastel Painters of Maine's International Exhibition, which runs from June 17 - July 16, in Kennebunk, ME. She also has a pastel painting in the Old Forge NY 7th Annual National Pastels Exhibition which closes June 25th.

Vasili Katakis reports that his first 2-day workshop to be held in the glass facade showroom at the Botanic Garden at Albuquerque's BioPark was very successful.



Call for Entries

26th Annual Purchase Prize Award Exhibit

Color Photo Deadline: August 1, 2011

Sept. 23 - 25 & Sept. 30 - Oct. 2, 2011 at Hearst Church Gallery, Pinos Altos, NM. Sponsored by Grant County Art Guild. For Prospectus, including the mail-in entry form, download at: www.gcag.org or contact Barbara Kejr at 575-538-8216 or Liz Goertz at 575-534-1363

"Little Gems" Juried Show

Digital Deadline: Wednesday, August 3, 2011

September 3 - October 28, 2011 at Open Space Visitor Center • 6500 Coors NW • Albuquerque, NM. An adjunct to the annual fundraising "A View with Room Exhibit", "Little Gems" offers small (6" x 8" max.), reasonably priced paintings which depict the City of Albuquerque Open Space lands.

The prospectus at:

<http://www.cabq.gov/openspace/visitorcenter.html>

Scroll down the page until you see:

[Prospectus for 2011 "Little Gems" Juried Art Exhibit.](#)

[Deadline: August 3, 2011.](#)

St. John's Cathedral Show

Entry Form Deadline: August 19, 2011

Painting delivery: Sept. 6 between 10 am & 2 pm.

From Sept - Nov. 2011 at Cathedral Gallery, 3rd St. & Silver SW, entrance on 3rd.

Submit up to 2 standard pieces, no larger than 30" x 38" framed and 2 miniatures, no larger than 8" x 8" framed. Each show is juried for the purpose of elimination due to space restrictions, appropriate subject matter, framing issues and aesthetics. Prospectus will be sent to PSNM members via email. To have one mailed, call Audrey Minard: 505-281-1966.

Artist-in-Residence Programs

Zion National Park

Applications Due: July 22, 2011

Provides selected artists with opportunity to live in Zion Canyon for 4 weeks to create works of art inspired by the park. Artists will present two public programs and donate, at the park's choosing, an original piece of artwork that represents their experience within the park. Artists selected by a jury of park staff, faculty from Southern Utah University's College of Performing and Visual Arts, and staff from the Braithwaite Fine Arts Gallery. Go to: www.nps.gov/zion for more information.

continued on page 7

Workshops

LISTING POLICY: All new announcements will be published with as much detail as space will allow. Repeat listings will be abbreviated. Deadline for submissions is 15th of month preceding next issue. Please send your listings for classes, events, workshops, or news via email to: psnm.news@gmail.com

Albuquerque and **Santa Fe** appear in **Red** to indicate workshops and classes which are held locally.

NATIONAL SHOW WORKSHOP

Nov. 1, 2, 3, 2011 - Tues, Wed, Thurs - 9:30 - 4:30

Hispanic Arts Building • EXPO NM, Albuquerque

Maximum 18 participants

Tuition: Members: \$350 (non-members \$385)

Deposit: \$100 now! • Balance Due: Sept. 1st

Taught by internationally acclaimed artist and Judge of our 20th Anniversary National Show

DESMOND O'HAGAN

Prominent among the qualities that make his art distinctive is the variety and uniqueness to be found in what he paints. It is his experience that originality in the selection of subject matter is an essential ingredient in producing art that is fresh and spontaneous. In addition to these qualities, it is important to him that each painting exhibit such artistic fundamentals as sound structure, exciting design, and harmonious color. His unique painting style has been evolving from a very young age and can be described as a style that enlists the viewer in the interpretation of details loosely portrayed. O'Hagan possesses the versatility to paint any subject, and the subjects he enjoys most to paint range widely from figurative and landscapes to scenes of the city.

Learn more about Desmond on his website:

www.desmondohagan.com

Articles featuring O'Hagan's paintings can be found in *AMERICAN ART COLLECTOR* magazine, August 2010, and *THE PASTEL JOURNAL*, December 2010.

Video link to recent studio show "An Urban View" can be found at: www.youtube.com/watch?v=Wx_Eyglp1pQ

NOW ACCEPTING REGISTRATIONS!

Email Marilyn Drake at: psnm.nswkshop@gmail.com

TAUGHT BY PSNM MEMBERS

Lee McVey, PSA, PAPNM, PSCC, SPS **Plein Air Classes**

July • Albuquerque and Santa Fe, NM

The more you paint outdoors, the better your studio landscape work will become. Improve your skills with one or more classes. Register for classes one at a time or as a series. Dates are flexible dependent upon weather.

Albuquerque classes: through end of June and into July. Santa Fe classes: Tuesdays July 12, 19, 26, with alternate dates July 14, 21, 28. \$35 + tax each class. To register or for more information: Call Lee at 505-417-3516 or email lee@leemcvey.com

NEW! Michael Chesley Johnson, PSNM
July - Sept 2011 • Campobello Island, New Brunswick
Plein Air Workshops at Michael's summer studio. Every week he offers a plein air workshop in oil and pastel. Come explore the beauty of the Canadian Maritimes (right across the US border from Lubec, Maine.) Harbors, fishing boats, bold cliffs, lighthouses. Paint in the mornings and explore the island the rest of the day! \$300 for five half-days. For more information, visit www.PaintCampobello.com or email mcj.painter@gmail.com

Maggie Price, PSA Workshops

Landscape painting; beginning to advanced welcome. Indoor classes designed to help create better paintings from photo reference; outdoor classes specialize in plein-air techniques. Workshops include demonstrations and personal assistance at artists' easels, with emphasis on technique and information about working in pastel. Information about Maggie, at www.MaggiePriceArt.com

July 11 - 15, 2011 • Santa Fe, NM

At Artisan/Santa Fe's art school facility. Indoor portion will focus on techniques in pastel. Daily demos and lots of assistance at your easel. Weather permitting, paint in and around Santa Fe. Contact Meg Davenport at Artisan/Santa Fe to register or for more info: 505-954-4179 ext. 117, or email megdavenport@earthlink.net

August 27 - Sept. 7, 2011 • Anstruther, Scotland
Based in small village near St. Andrews. Day trips to fishing villages and castle gardens. Sponsored by Jack Richeson & Co. Brochure at: www.MaggiePriceArt.com
September 15 - 17 • Hot Springs Village, AR
Indoor class, focusing on creating lively paintings from photos. Sponsored by Brush Strokes; contact Teresa Widdifield, 501-922-9292

October 8 - 17 • Andalucia, Spain

In Genal Valley (southern Spain) in a small village at a

continued on page 6

Workshops

continued from page 5

lovely hotel with day trips to surrounding towns, cities and painting spots. Flyer at: www.MaggiePriceArt.com

October 21 - 23 • New York City, NY

Indoor technique-intensive workshop, covers issues specific to pastel and concentrates on elements such as value, color temperature, composition, aerial perspective, and compensating for flaws of photos.

Sponsored by PSA: www.pastelsocietyofamerica.org

November 7 - 11 • Sautee, GA

Five-day workshop, both plein air and studio techniques, in mountains of northern Georgia. Special for this class: work in pastel and/or water-soluble oils. Sponsored by Art Immersions; email Cynthia Whitney at: cwhitney@hemc.net

Terri Ford Workshops

July 9 - 11 • Bend, OR

Cascade Fine Art Workshops - Contact: Sue Manley 541-408-5524 or info@cascadefineartworkshops.com
www.cascadefineartworkshops.com

July 14 - 17 • Mt. Vernon, WA

Sponsored by La Conner Art Workshops
Contact: info@laconnerworkshops.com
www.laconnerartworkshops.com

August 3 - 5 • California Coast

Near Carmel/Pacific Grove, CA. Contact Terri Ford, 408-286-3801 or tford@terrifordart.com

August 26 - 28 • Maquoketa, IA

Sponsored by Maquoketa Art Experience
Contact: maquoketaartexperience@hotmail.com
or tford@terrifordart.com

September 9 - 11 & 13 - 15 • New Hampshire

Pastel Society of New Hampshire
Contact: Shaunna Smith, 603-566-8611
sdsmith7@comcast.net

September 18 - 28, 2011 • South of France

Plein air painting, historic villages, fabulous food! At Domaine du Haut Baran in the beautiful Lot Valley.
Contact Terri at 408-286-3801 or tford@terrifordart.com
www.terrifordart.com

Mike Mahon Workshops

Focus on the step-by-step painting process from concept to final stroke. For Pastel, Oil, or Acrylic.

July 13 - 15 • Santa Fe, NM - Process/Plein Air

August 1 - 3 • Clovis, NM

August 10 - 12 • Santa Fe, NM (Artisan)

September 26 - 30 • Taos, NM - Plein Air

October 31 - Nov. 4 • Hot Springs Village - Portrait

website: www.mmahon.com

email: art@mmahon.com or phone: 505-473-1098

Jakki Kouffman Workshops

Master Pastellist, PSA; PAPNM, Signature Member

September 19 - 23 • Taos, NM

5-day workshop (Mon - Fri) Structured approach to outdoor landscape painting in northern NM, focused primarily on essentials of value, color and composition.

Pastel and Acrylic painters are welcome to participate.

\$575 (\$613 with NM GR tax); payable to Jakki Kouffman

Registration: Jakki Kouffman, (505) 466-1800 or

art@jakkikouffman.com

NEW! Dina Gregory Workshop

October 26 - 28 • Palo Duro Canyon, TX

Paint *en Plein Air* when cottonwoods have turned yellow and the mountains create a red ribbon backdrop. Stay after 4pm for some spectacular sunsets if you choose. Cost is \$300 for Amarillo Art Institute members and \$335 for non-members. Register at: www.amarilloartinstitute.org or call at 806-353-8802 Dina's website is: www.dinagregory.com

TAUGHT BY OTHERS

Albert Handell Workshop

August 25 - 27 • Albuquerque, NM

Three-day workshop (9:30 am-4:30 pm) hosted by the New Mexico Art League, 3409 Juan Tabo NE.

Indoor studio painting... Learn what to select and what to take out to make a strong design and statement. Daily morning demos, either in pastel or mixed media pastel (watercolor and pastel) or oil, to see how a Master Artist works in a studio setting to perfect his outdoor studies and bring life to his photographs. All levels with experience working in pastels, oils, or water media.

Tuition: \$360

To Register, contact Workshop Coordinator, Maria Cole at: mariaCole1@q.com, or 505-797-7988

Jack Pardue, PSA Workshop

September 19 - 23, 2011 • Albuquerque, NM

Spots still available to study plein air painting with this award-winning painter. Learn to paint in an impressionistic manner and to isolate a specific portion of the landscape without being overwhelmed by the expansive view before them. Learn the importance of an accurate but loose drawing with composition / design before moving to color and value. Individual at-the-easel instruction throughout. Daily demos and critiques. continued on page 7

Beginning to advanced welcome. Jack's website is:
www.parduestudio.com

Tuition: Only \$400 for 5 full days.

To register call Jack at 703-765-2622 or email:
parduestudio@msn.com Or contact Sandy Rosen at:
505-771-0963 or email: sandyart1@live.com

Alicia Sotherland Portrait Workshop

September 20 - 23 • Killarney, Ireland

Students learn to create atmospheric portraits. Held at the beautiful Lake Hotel. Special rate of 50 Euros pp/do. Hotel reservations: www.lakehotel.com Workshop Cost: \$500

To register please contact: 760-746-6256 or email: aliciasotherland@hotmail.com

NEW! Jeanne Rosier Smith Workshop

October 7 - 9, 2011 • Littleton, Colorado

The Pastel Portrait, held at Terry Ludwig Studios

Day 1: Portrait Basics: The Head and Shoulders Sketch
Morning demo of basic approach to painting portrait, with emphasis on proportions (general to specific), shape, and value. In afternoon, students complete their own portrait sketch from live model.

Days 2 & 3: The Developed Portrait: More extended, developed portrait painting. Instructor demo each morning, focusing on composition, flesh tones, handling backgrounds, edges, and developing details. The greater part of each day will be devoted to individual instruction at your easel, as you develop your own portraits from our model. Hone your skills, find your focus, enliven your flesh tones with those luscious Terry Ludwig portrait colors! Appropriate for beginner to advanced. Small group allows for plenty of at-easel individual attention. Jeanne will make you feel at ease and help you simplify what you see.

\$350, includes model fee

Jeanne's website is: www.jeannesmithart.com

To register for this workshop or for more information, contact Jeanne at jeanne@jeannesmithart.com, or go to www.terryludwig.com

NEW! Doug Dawson Workshop

November 7 - 9, 2011 • Grapevine, TX

Monday - Wednesday from 9 - 4 each day in Community Room of the Stacy Building.

Doug is the judge and juror for the PSSW National Show (see call for entry at right).

Tuition: \$325 PSSW members; \$350 non-members.

Deposit: \$100 to hold your spot.

Contact Robbie George at georgert@att.net

or April Bradshaw at captmartinapril@aol.com

Artists may also contact Jessica Kusky, Artist-in-Residence Coordinator at 435-772-0184 or Zion_Artist_in_Residence@nps.gov.

Denali National Park

Entry Deadline: September 30, 2011

Denali is now accepting applications for residencies through the summer of 2012. Details about the program history, answers to commonly asked questions, as well as information about previous Denali artists-in-residence can be found online at:

www.nps.gov/dena/historyculture/arts-program.htm

CaFÉ (Call for Entries) is part of Western States Arts Federation (WESTAF). www.callforentry.org

Here is a small sampling of current listings:

Real People 2011

Fee: \$35.00 (Real People 2011)

Entry Deadline: June 30, 2011

Real People is a national juried fine art exhibition celebrating the arts through faces and figures. Real People is open to all artists and media; submitted work must depict the human form or face in some manner.

American Impressionist Society 12th Annual National Juried Exhibition

Entry Deadline: July 1, 2011

Event Dates: October 15 - November 15, 2011

At Mountainsong Galleries in Carmel-by-the-Sea, CA.

Judge: Scott L. Christensen, AISM Over \$50,000

in cash and prizes. Juried works will be shown with the work of AIS Master Artists, Carolyn Anderson, Clayton J. Beck, III, Scott Burdick, Nancy Bush, Scott Christensen, Kim English, Nancy Guzik, Albert Handell, Quang Ho, Peggy Kroll Roberts, Calvin Liang, Kevin Macpherson, C.W. Mundy, and Zhiwei Tu. AIS will also sponsor workshops by Scott L. Christensen and Kim English during the week of the show. Visit www.AmericanImpressionistSociety.org for more info.

Pastel Society of the Southwest 30th Annual National Juried Exhibition

CD & Entry Fee Deadline: Sept. 1, 2011

Exhibition from Nov. 1 - 28, 2011 at Eisemann Center, Richardson, TX

Judge and Juror: Doug Dawson

Entry fee: \$30, *plus* \$30 PSSW Membership Dues

Prospectus available online at: <http://www.pssw.info/>

For more information, contact: Connie Erickson at: c.art.erickson@gmail.com