



HIGHlight

November 2009

From the President...

Dear PSNM Friends —

A funny thing happened as I prepared my next to last newsletter article. I chose to include the following thoughts written by Martha Graham. My sister, who writes, passed them on to me. I had emailed my article to Marilyn and thought it was all set. While cleaning up in my studio I ran across a copy of the April 2006 PSNM Mid-Tone and there was the same thing, which then President Betsy Greenlee, had included in her article. I've decided to leave it in because I think its good enough for a repeat.

Creativity

There is a vitality, a life force, a quickening that is translated through you into action, and because there is only one you in all time, this expression is unique. If you block it, it will never exist through any medium and be lost. The world will not have it. It is not your business to determine how good it is; it is your business to keep it yours, clearly and directly, to keep the channel open. You do not even have to believe in yourself or your

INSIDE...

pg 2 - 2010 Ballot for Officers and Outstanding Volunteer Award, Dues Renewal Reminder

pg 3 - Program Review

pg 4 - Member News

pg 5 - Workshops

pg 6 - Library and Supply Offerings

pg 7 - Call for Entries

worth. You have to keep open and aware directly to the urges that motivate you. Keep the channel open. No artist is pleased. There is no satisfaction whatever at any time; there is only a strange, divine dissatisfaction; a blessed unrest that keeps us marking and makes us more alive than the others.

I hope you'll find this food for thought. I know I can relate to what is expressed.

I'm looking forward to our National Show and I hope to see you at the Opening Reception Friday, November 6th.

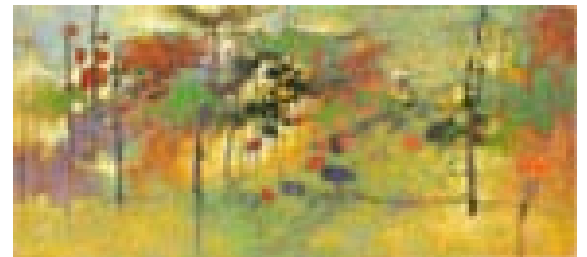
— Elaine Koehler

Monthly Meeting at the Albuquerque Museum

Saturday, November 14 • 10 - Noon

Rick Stevens Presentation

Landscape has been a consistent subject for Rick Stevens during his 30 year artistic career. He has experimented with various styles, techniques, and modes of abstraction. He will be discussing how the use of other mediums has influenced his pastel technique, and reciprocally, how his pastel methods currently inform his work in oils. Rick's digital presentation will show process, influences, and the development of his current artistic vision. To get a preview of Rick's work, you can go to his website: www.rickstevensart.com or see it in a group show which opened on October 16th at Hunter Kirkland Contemporary on Canyon Road in Santa Fe. Their website is: <http://www.hunterkirklandcontemporary.com>



Coming Up...

December 12 - Clive Tyler; January 9 - Paul Murray

PSNM Officers & Committee Chairs

President	Elaine Koehler
Vice President	Fred Miller
Treasurer	Peggy Orbon
Secretary	Carol Lovelady
Member-at-Large	Enid Sorenson
Communications	Carol Hall
Corresponding Sec.	Kathleen Dietz
Evaluation	Marilyn Drake, Lee McVey, Fred Yost
50/50	Mary Stovall
Librarian	Karen Servatt
MasterWorks Rep	Enid Sorenson
Membership	Gaye Garrison
National Show	Julie Maas
Newsletter	Marilyn Drake, Alice Flitter
Programs	Maryann McGraw
Program Review	Jeanne Weitz
Publicity	Diana Stauffer
Refreshments	Beverly Synder
Signature Membership	Leila Hall
Website Manager	Marilyn Drake

* To send emails to people on this list, go to www.pastelsnm.org then click on Contacts.

Membership Renewal

DUES ARE PAYABLE by JAN. 1st
for Jan. to Dec. 2010

Remember, dues can be paid online
with a credit card using PayPal.

Watch for Renewal Form in the December issue
of HIGHLIGHT, or go to www.pastelsnm.org
Go to About PSNM; then click Membership
Form where indicated. Follow all the instructions
on the form to complete the process.

**For inclusion on the 2010 Membership Phone
List, your dues must be paid in full by
Feb. 15, 2010.**

PSNM Officers Ballot

**Votes will be counted at the
November Meeting!**

- Fred Miller, President
- Gwen Wilemon, Vice President
- Mack West, Treasurer
- Carol Lovelady, Secretary
- Write-In: _____

Please Print

Outstanding Volunteer Award

Please Print Your Nominees on the Lines Below.

Name: _____

Name: _____

Name: _____

Signature

Date

To Vote for the 2010 PSNM Officers and to
Nominate up to 3 PSNM Members for the
Outstanding Volunteer Award:

- 1) Print page 2 of this issue of HIGHLIGHT;
- 2) Filling in the ballot above;
- 3) Sign and date ballot where indicated;
- 4) Cut it out;
- 5) Bring it to the November meeting.

Or you can mail the completed ballot to:
PSNM, PO Box 3571, Albuquerque, NM 87190
(Must arrive before Nov. 11th)

NATIONAL SHOW 2010

Time to start planning for the 2010 show! Volunteer now to be the Chairperson(s)!

It would be a terrific start to 2010 if our 19th Annual National Show Chair were to be announced at our December (or even November) meeting. Please contact any of our current officers if you're considering volunteering for this important position in PSNM. We can assure you there is plenty of help available if you accept the job.

October Program Review

by Jeanne Weitz

Destination Abstraction

For the past 40 to 50 years, the subject matter for many artists in the Southwest has often been landscapes featuring blue skies, purple mountains, and Western themes. These paintings provide a view of our countryside that is relaxing and comfortable, like slipping on a beloved old pair of slippers at the end of a long day. In addition, paintings on these themes tend to sell well in galleries, so artists have many incentives to paint traditional Southwestern scenes. But sometimes artists tire of doing the same old thing with the same old materials and techniques, and struggle to find a way around artistic burnout.

A few years ago, Betsy Greenlee began talking to other artists - both within and outside of PSNM - who she felt might be interested in working together to find ways to stimulate new energy and imagination. The group, which includes Jaci Fischer, Rod Groves, Leila Hall, Jeff Potter, Elaine Scott, and Fred Yost, began meeting regularly about two and a half years ago. As they discussed possible solutions to the burnout problem, the group members discovered that they also shared an interest in exploring ways to push beyond their usual representational work toward greater abstraction, and that has become the focus of many of their projects.

Every six weeks or so, they meet to select a new problem designed to challenge their familiar ways of making art, and to show each other the results of their independent work on the previous problem. As Jaci put it, "We concentrate on new thoughts spurred on by conversations, reading, and things we see. I think of these different paths as a way to see the 'zoo of the new,' in Sylvia Plath's phrase, to get out of a familiar process, get pushed a bit... perhaps get a bit uncomfortable and work through it." She continued, "Abstract art has been around for decades and is certainly not new to anyone. We are just trying things that are new to us, and each person has their own idea of what is new or different and what they want out of the experience. Our projects are learning experiences that could lead to an entire body of work, or just influence the way we approach our usual work, or be rejected all together." This approach is miles away from the nonobjective art of the forties which featured happy accidents, animal footprints, and sometimes disgusting subjects or messes. The artists in this group plan and execute their work painstakingly. The results are surprising, like the excellent design seen in the art of primitive peoples, because it expresses in the simplest terms possible the thought that motivated the image.

Betsy began the program by offering a definition: "Abstract art is depictions of real objects that are intentionally modified, sometimes drastically, from realistic appearances, but that retain the elements of artistic composition such as form, line,

shape, value, texture, color, and space." To quote Ted Kautzky, a master watercolorist and teacher of the mid-twentieth century, "Subject matter is not nearly as important as the arrangement of the elements into a pattern. Thus, the abstraction that contains no subject matter may be a satisfying work of art."

Each member of the group then spoke about a particular project, often including why they were drawn to it, the problems they encountered, and their ideas for further exploration. Leila showed a collage she had created based on a pastel painting. As an accomplished quiltmaker and seamstress, Leila was inspired to use materials she had on hand to emphasize and abstract the pattern of light and dark shapes in the painting. Jeff demonstrated how he used his computer skills with Photoshop to transform a photo through successive steps into an entirely abstract design, one of which became the basis of a prize-winning painting. Elaine confessed that because she is an intuitive artist, in that she likes to begin without any specific idea and just let her love of color lead her where it will, her favorite project was to complete a large abstract painting with no other specified constraints.

The next three projects, like Jeff's, all involved working through stages from a representational image to a final highly abstract composition. Betsy showed a series that involved isolating a small area within a painting done in her usual style, then painting that area on the same scale as the original, and continuing this process until the original subject matter was entirely subsumed by the abstract design. Betsy liked this project because, unlike Elaine, she finds it difficult to create visual forms without a natural reference. In this project, the forms were already there; the problem was to find them and recreate them on a larger scale. Jaci's series of progressively more abstract animal images was inspired by Durer's famous wood engraving of a rhinoceros. In each stage, Jaci emphasized one or more of the elements of design—for example, shape or line or color—ending with a drawing that brought together all of those experiments into an entirely nonobjective image. Similarly, Fred began with a drawing of a girl made from life, which he then simplified in various ways to arrive at four new interpretations of the original subject.

The program ended with suggestions for techniques a group can use to generate ideas for projects and a brief discussion of some of the benefits of working in a group: the sharing of ideas and discoveries, the encouragement to explore deeply one's own process with no expectation of a particular outcome, honest feedback from trusted others, mutual support when the going gets tough. It was an exciting and entertaining program.

Member News

Karen Cooper was invited last year to be one of the 24 members of the Western Artists of America. In August, at her first museum show with the group, she took the Gold Award for Dry Media for a pastel entitled "Bronc Driver". The show was at the Museum of Western Art in Kerrville, Texas.



Bill Canright had his painting, "Retired Workhorse", accepted in the PSA Pastels Only show in New York.

Terri Ford will exhibit in "Things Remembered", an all pastel show at the Knowlton Gallery in Lodi, CA, with fellow pastellists Gil Dellinger, Kim Lordier and Clark Mitchell, March 2 - April 24, 2010. Reception Sat. March 6, 1-4pm. This spring she participated in both the Sonoma Plein Air Festival and The Carmel Art Festival Plein Air Event where her painting "Morning Fog" was awarded Best Pastel. Her painting "Barn in Morning Light" received the Connecticut Pastel Society Award at the PSWC Pastels USA exhibit at the Triton Museum. She is very honored to have her painting "Eiffel Tower Winter" appear on the cover of the new Sennelier pastel set - "Paris Collection", 120 half-stick soft pastels.

Mike Mahon is now represented in Austin, Texas by the Art Exchange Gallery-Austin, located at 1611 West 5th Street. Phone: 512.992.0130. He invites you to drop by some time to view his work and the work of many other fine artist represented by the Art Exchange Gallery. When you're in the Santa Fe, NM, area you can fine Mike's work at the Art Exchange Gallery at 618 Canyon Road. The Skirball Cultural Center Museum, Los Angeles, CA, sponsored Mike to demonstrate how to connect academic school subjects to the Arts and world culture. He presented a one day drawing workshop as part of a multidisciplinary teacher professional development program sponsored by the Skirball Cultural Center Museum. The program consisted of a PowerPoint presentation and a painting demonstration from a live model.

Lyle Brown was awarded Best of Show Purchase Award at the Grant Country Art Guild's 24th annual Exhibit.

Fred Miller and **Marilyn Drake** spent 15 exciting days on a cultural and painting excursion to China with Ned Mueller, who is a Signature member of the prestigious

Plein Air Painters of America and the Oil Painters of America. Fred's wife Marilyn, artist Mary Bechtol and her husband David were also part of the group. After reaching Beijing, they flew to Kunming for one night, where they were met by one of the Linden's associates. She showed them some of the local sights, including the Yunnan School of Art. A 4 ½ hour bus ride through the rugged Yi ethnic region of Yunnan to the Dali Valley, nestled in the shadows of the 14,000 foot Cang Shan mountain chain, the southeast vestiges of the Himalayas, brought them to the Linden Centre in Xizhou (pronounced she - joe), a small farming and fishing community outside Dali City. The nationally-protected villa, former home to one of the Southwest Silk Road's leading merchants, has been restored to its dynastic elegance and forms a perfect base for creative exploration. Most of their time was spent exploring and painting in and around Xizhou, but they also had a 3 night stay at the World Heritage Site of Lijiang, nestled in an 8,000 foot high basin under the 18,000 foot Jade Dragon Snow Mountain, which provided additional painting opportunities.

Offered in a joint effort between Kewaunee Academy of Fine Art in Kewaunee, WI and the Linden Centre, two Artists in Residence Masters and twelve Atelier students will be chosen for the first half of 2010 by November 20, 2009. To learn more about the Linden Centre, future painting programs, and the Artist in Residence and Atelier program, go to either: www.linden-centre.com or to the Barnsite Gallery at: www.barnsiteartstudio.com

Maggie Price had a painting accepted into the Pastel Society of America 2009 exhibition, and the painting received a purchase award. She was invited to participate in the Pastels by Invitation exhibit in August, 2009. Also in 2009, she attained Master Circle status with the International Association of Pastel Societies (IAPS) and was elected to membership in the Salmagundi Art Club, New York City. In May 2009, she became president of IAPS, and continues to serve on its Board of Directors. Her second instruction book on pastels is expected to be released by North Light Books in June, 2011.

Elaine Koehler and **Peggy Orbon** will be exhibiting some of their paintings at Frame City & Gallery, located at 3810 Central SE, from Nov. through Dec. The gallery can be reached at 296-4648 for hours of operation.

We are sad to learn that PSNM member **Donna Bianchetti** passed away on March 16, 2009. We extend our sympathy to her family. Her website, which was still available for viewing, shows she was very creative and a number of her designs are proof of that. www.donnabdesigns.com

Workshops

LISTING POLICY: All new announcements will be published with as much detail as space will allow. Repeat listings will be abbreviated. Deadline for submissions is 15th of month preceding next issue.

Please send your listings for classes, events, workshops, or news via email to: Alice Flitter - awflitter@aol.com

To find out about other workshops, shows, etc. check magazines and online sources. Use Google to search for additional information.

TAUGHT BY PSNM MEMBERS

Michael Chesley Johnson Workshops

Mid-December through March • Sedona, AZ

Mentoring Plein Air Workshops with award-winning artist Michael Chesley Johnson in the beautiful "Red Rock Country" of Sedona. Unlike his regular workshops, in these mentoring workshops you'll paint right alongside Michael. He'll offer plenty of mini-demonstrations, critiques and "art talk," as well as the opportunity to enjoy some very scenic locations. For the last 4 years Michael has painted as one of 30 invited artists in the annual Sedona Plein Air Festival and knows the area well. Michael is a Master Pastellist of Pastel Artists Canada and a Signature Member of the Pastel Society of America and the Pastel Society of New Mexico. Also a juried member of Oil Painters of America, he's a longtime contributing writer for *The Artist's Magazine* and *The Pastel Journal*. The author of *Backpacker Painting: Outdoors with Oil & Pastel*, he teaches workshops throughout the US and Canada. For more on Michael, visit www.MichaelChesleyJohnson.com Each week consists of five half-days. You'll paint half the day and then have the rest of the day to explore the area or paint more on your own. Each workshop will be small with no more than 4 students. Michael will be painting in oil and pastel, but all media are welcome. For intermediate to advanced painters with previous plein air experience. Lodging is limited, so don't wait! Cost: \$1000 includes lodging, two meals a day plus instruction. Contact: Michael Chesley Johnson, mcj.painter@gmail.com, 575-267-2450. For more information, visit www.PaintSedona.com.

Maggie Price, PSA Workshops

Maggie teaches both indoor and plein-air workshops; some classes are combinations of both. All classes focus on painting the landscape in pastel; beginning to advanced students are welcome. Indoor classes are designed to help create better paintings from photographic reference; outdoor classes specialize in plein-air techniques.

Feb 8 - 12 • Phoenix, AZ

Escape the cold weather and come to Phoenix to paint outdoors! Our five day workshop will start with some indoor preparation and then move to plein air in several wonderful locations. Sponsored by the Arizona Pastel Artists Association; contact Karen Budan, 480-473-1752, budan@cox.net for information or to register.

April 19 - 23, 2010 • Sautee, GA

Five day indoor/outdoor workshop in the mountains of northern Georgia, about two hours from Atlanta. Indoor sessions focus on techniques of using pastels, and if weather permits we may go outdoors for some plein air painting. Contact Cynthia Whitney, 706-878-9943, or email cwhitney@hemc.net.

May 3 - 7, 2010 • La Conner, WA

Sponsored by LaConner Art Workshops. Indoor, technique-intensive workshop to boost your pastel skills. Contact Robyn Williamson, robyn@LaConnerartworkshops.com or 369-416-6556, ext. 5.

May 28 - 30, 2010 • Denver, CO

Three day workshop, indoor, technique-intensive to boost your pastel skills. Location: Ludwig Studios, Littleton. Contact Maggie Price.

June 7 - 11, 2010 • Pollock Pines, CA

Five days plein air painting in the foothills of the Sierras, along a spectacular river and other nearby locations. Contact Maggie Price for information or to register.

September 11 - 22, 2010 • St. Abbs, Scotland

Ten days of plein air painting in and around a beautiful small fishing village on the eastern coast of Scotland in the Borderlands. Dramatic rock formations, boats and buildings, castles and countryside will offer a wide variety of subjects. Materials will be provided by Jack Richeson & Co. and shipped to Scotland and back to your home-no worries about packing materials or carting them on the airplane! Details (itinerary and pricing) to be announced soon.

October 1-11, 2010 • Juzcar, Spain

The Genal Valley in Andalucia, southern Spain, has been mostly unspoiled by tourism or industry. We base

continued on page 6

Workshops

continued from page 5

in a tiny village at a lovely hotel and take day trips to surrounding villages and painting spots. Two day trips will be to larger cities (Ronda and Granada) to round out the experience of Andalucia. It's a beautiful area, a variety of painting subjects from landscape to buildings and people and interesting architecture-altogether a unique experience! Contact Maggie Price or see the web site for more information.

For more information or to arrange a workshop in your area, contact Maggie at pstudios@cableone.net, 505-294-7752, or visit www.MaggiePriceArt.com

NEW! Terri Ford Workshops

March 2 - 5, 2010 • Lodi CA

Knowlton Gallery

Contact Robin@KnowltonGallery.com

June 1 - 10, 2010 • South of France

Contact Terri at 408-286-3801

or email tford@terrifordart.com

www.terrifordart.com

Terri also offers private instruction by appointment.

NEW! Jakki Kouffman Workshops

Master Pastellist, PSA; PAPNM, Signature Member

May 9 - 13, 2010 • Abiquiu, NM

September 20 - 24, 2010 • Taos, NM

Details at www.jakkikouffman.com

email: art@jakkikouffman.com or call: 505-466-1800

TAUGHT BY OTHERS

MasterWorks NM Workshop

Doug Dawson

April 25, 26 & 27, 2010 • Albuquerque, NM

Sun., Mon., and Tues. from 9 am - 4 pm

Studio Landscape Class. Find and develop your own personal style with lots of individual instruction. During demonstrations Doug will explain his thought process.

All skill levels.

Tuition \$285

For more information, or to register, contact Sharon Jensen at ssmjens@aol.com or 505-323-7522

The big artist... keeps an eye on nature and steals her tools. ~ Thomas Eakins

FROM THE PSNM LIBRARY ...

Books from authors D-K will be available at the November meeting, along with various other materials.

If you'd like a specific item, you can look at the PSNM website Library Listing and send an email to: khservatt@comcast.net to request having it brought for you to the next meeting.

Dakota Art Pastels now carries **PASTELMAT**, A New Pastel Paper imported from France!

As profiled in Richard McKinley's *Pastel Pointers Blog!*

- Gentle to the touch (try it to believe it)!
- Incredible ability to hold many layers
- Fine surface for detail work
- Acid Free and lightfast
- Handles all wet and dry techniques
- 8 beautiful colors
- 6 interleaved pads

Available in White, Anthracite, Brown, Sienna, Sand, Maize, Dark Grey, & Light Grey

Dakota Online Promo priced at up to 40% OFF suggested retail!

7 x 9 pad	MSRP: \$34.99	SALE: \$22.90
9 x 12 pad	\$49.99	\$32.90
12 x 16 pad	\$79.99	\$49.90
20 x 28 sheet	\$16.99	\$9.90

Dakota Art Pastels, P O Box 2258

Mount Vernon, WA 98273

www.dakotapastels.com 888-345-0067

Utrecht Art wants you to know they have a broad selection of easels from reputable manufacturers and have recently upgraded their selection, ranging all the way from full-sized studio A-frame and H-frame, to *plein air* portable easels to small tabletop display easels that are great for displaying artwork.

You can see them and find easel accessories at: <http://www.utrechtart.com/Easels.cfm>

Call for Entries

NEW! Registration Deadline: Nov. 6, 2009

Artwork due at the Arts Alliance January 4 - 8, 2010
5th Annual *For the Love of Art* to benefit the Arts Alliance.
Show dates January 15 - 29, 2010

Here's a chance to be creative with our pastels, donate to Arts Alliance. You name the percentage going to Arts Alliance (50%, 75%, 100%) with the remainder going to the artist. Our Valentine Art can be valued at \$214.10 but no higher. If interested contact Judy at Arts Alliance, 268-1920 or judy@abqarts.org

Digital Deadline: November 20, 2009

IAPS 15th Juried Exhibition

City of Brea Gallery, Brea, California

January 23-March 5, 2010

Jurors: Richard McKinley, Maggie Price, Fred Somers

Judge: Terri Ford

Download prospectus at www.pastelinternational.com

Digital Deadline: December 7, 2009

Hubbard Museum of the American West and City of Ruidoso Downs - Biennale Grande

Jan. 30 - April 11, 2010

Jurors: Art professionals

Entry Categories: Drawing, Painting, Printmaking,
Sculpture, Ceramics, Fiber Art, Mixed Media

Download prospectus at: www.hubbardmuseum.org

or contact: David Mandel, Curator of Exhibits at:

DMandel@HubbardMuseum.org

NEW! Digital Deadline: December 14, 2009

The Wichita Center for the Arts - Pastel National 2010

March 19 - May 16, 2010 in Wichita, KS

Juror/Judge: Doug Dawson

Download prospectus at: www.wcfta.com

For more info: Molly Tully, PR/Marketing Director,

The Wichita Center for the Arts

mtully@wcfta.com or call 316-634-2787 ext. 214

NEW! Digital Deadline: January 11, 2010

Maryland Federation of Art (MFA)

33rd Annual Art on Paper

March 19-April 18, 2010

Exhibited at Maryland Federation of Art's, Circle
Gallery, Annapolis MD

Juror: Joann Moser, Senior Curator of Graphic Arts,
Smithsonian American Art Museum, Wash., D.C.

Cash awards \$1000. One-two entries \$25, additional
four entries \$5.00 each. USA residence.

Prospectus: Send SASE: AOP, Dept.-PSNM, 18 State
Circle, Annapolis MD 21401.

Download www.mdfedart.org Email for PDF:
info@mdfedart.org Subject line: AOP-PSNM

Digital Deadline: January 30, 2010

MasterWorks NM

April 9 - 30, 2010

EXPO NM, Albyquewew

Large Division: Judge - Peter A. Nisbet

Jurors - Andrew Connors, Alan Radebaugh, Sallie

RitterMiniature Division: Judge - Wes Pulkka

Jurors - Ann Bromberg, Martin Vela, Susan Weeks

Saturday, March 20, 2010 • ALL MINIATURE

ENTRY FORMS *and* Miniature Shipped Artworks

Prospectus available at: www.masterworksnm.org

For further Info, contact Panola Lisle at 296-5358

NEW! Digital Deadline: April 26, 2010

IAPS is pleased to announce that the prospectus for the
International Association of Pastel Societies' upcoming
exhibition has been posted on the IAPS web site:

[http://www.pastelinternational.com/COMPETITIONS/
competitions-exhibitions.html](http://www.pastelinternational.com/COMPETITIONS/competitions-exhibitions.html)

Butler Museum, Youngstown, Ohio, in the Flora B.

Giffuni Gallery

July 11 - August 29, 2010

Jurors: Alan Flattmann, Liz Haywood-Sullivan, and

Jimmy Wright

Judge: Maggie Price

Approximately 35 paintings will be selected

Awards - \$1,000 for first place and additional cash

awards. All artists whose work is accepted will receive

one point towards IAPS Master Circle status; an award to

a painting earns an additional point. The Gold Medallions

for Master Circle honorees will be presented at the

2011 convention. Both IAPS shows will be wonderful

exhibitions and they hope you will take advantage of the

opportunity to enter.

Digital Deadline: May 3, 2010

MidAmerica Pastel Society - 2nd National Open Exhibition

Aug. 26 - Sept. 25, 2010 in Merriam, KS

Juror/Judge: Lorenzo Chavez

Download prospectus at: www.midamericapastel.org

Chavez Workshops - Aug. 23 - 25 & Aug. 27 - 28, 2010